

**Can cutaneous telangiectasiae, as late normal-tissue injury predict cardiovascular disease in women receiving radiotherapy for breast cancer?**

G A Tanteles<sup>1,2\*</sup>, J Whitworth<sup>2\*</sup>, J Mills<sup>2</sup>, I Peat<sup>2</sup>, A Osman<sup>2</sup>, G P McCann<sup>3</sup>, S Chan<sup>4</sup>, J G Barwell<sup>1,2</sup>, C J Talbot<sup>1</sup>, R P Symonds<sup>2†</sup>

<sup>1</sup>Department of Genetics, University of Leicester, Leicester LE1 7RH, UK

<sup>2</sup>Department of Cancer Studies and Molecular Medicine, University Hospitals of Leicester, Level 2, Osborne Building, Leicester Royal Infirmary, Leicester LE1 5WW, UK

<sup>3</sup>Department of Cardiology, University Hospitals of Leicester, Glenfield Hospital, Groby Road, Leicester LE3 9QP

<sup>4</sup>Department of Clinical Oncology, Nottingham University Hospitals NHS Trust (City Hospital Campus), Nottingham NG5 1PB, UK

\* Authors contributing equally

† Corresponding author

Correspondence: Dr RP Symonds; Email: rps8@le.ac.uk

## Abstract

**Background:** Overall, approximately 5% of patients show late normal-tissue damage following radiotherapy with a smaller number having a risk of radiation induced heart disease (RIHD). Although the data is conflicting, large studies have demonstrated increased risks of cardiovascular disease (CVD) for irradiated compared to non-irradiated patients or for those treated to the left breast or chest wall compared to those treated to the right. Cutaneous telangiectasiae as late normal-tissue injury have so far only been regarded as a cosmetic burden. **Methods:** The relationship between late normal-tissue radiation injury phenotypes in 149 irradiated breast cancer patients and the presence of cardiovascular disease was examined. **Results:** A statistically significant association between the presence of skin telangiectasiae and the long-term risk of CVD was demonstrated in these patients ( $P=0.017$ ; Fisher's exact test). **Interpretation:** This association may represent initial evidence that telangiectasiae can be used as a marker of future radiation-induced cardiac complications. It could also suggest a common biological pathway for the development of both telangiectasiae and CVD on the basis of a genetically predisposed endothelium. To our knowledge this is the first reported study looking at this association.

**Keywords:** breast cancer; late radiation damage; cardiovascular disease; telangiectasiae

## Introduction

Virtually all breast cancer patients treated with breast conservation, and patients at high risk of recurrence following mastectomy, receive radiotherapy. The benefits of radiation therapy are not however complication-free. There is a wide spectrum of normal-tissue reactions, and as life expectancy of cancer patients improves, these are increasingly of clinical importance. Tissue toxicity may range from asymptomatic changes in tissue structure and function, to severe cosmetic disfigurement and life-altering changes in organ function (Bentzen *et al.*, 2003). The effects of radiotherapy can be divided into *early/acute* or *late*, depending on whether they occur within or after 90 days following radiation treatment (van der Kogel, 1993). Fibrosis, telangiectasiae and atrophy are examples of common late, normal-tissue manifestations (O'Sullivan and Levin, 2003).

Radiotherapy substantially reduces the risk of local recurrence after surgery, with a modest reduction in cancer mortality offset by an increase in contralateral breast cancer and cardiac disease, which is more marked in older trials. Many of the techniques used involved some unavoidable irradiation of the heart leading to a 27% (95% confidence interval [CI] 13-41%) increase in mortality from heart disease and reducing the beneficial effect of radiotherapy on overall survival (Clarke *et al.*, 2005). The cardiovascular mortality risk in patients receiving radiotherapy for left-sided breast cancer tends to become apparent after more than 10 years of follow-up (Darby *et al.*, 2003). It seems that this risk is side and technique specific and is particularly associated with irradiation of the internal mammary nodes (HR=1.9, 95%CI 1.0-3.3) (Paszat *et al.*, 2007). Evidence also exists of a significant increase in the relative risk for myocardial infarction (MI) for women who received adjuvant radiotherapy for left-sided compared to right-sided lesions (Paszat *et al.*, 1998; Rutqvist and Johansson, 1990). All cardiac structures including the pericardium, myocardium, valves, conduction system, and coronary arteries are amenable to radiation damage and a common pathophysiologic pathway appears to be that of microcirculatory damage (with the exception of valvular disease as valves are avascular) (Stewart *et al.*, 1995).

More recently, a greater number of patients received treatment to the intact breast without parasternal internal mammary node irradiation, which reduces the cardiac irradiated volume. Although the cardiac dose from left-tangential radiotherapy has also decreased considerably over the last few decades, part of the heart still receives >20Gy for approximately half of those with left-sided tumours. The cardiac dose for right-sided patients is generally from scattered irradiation alone (Taylor *et al.*, 2008).

A wide range of additional risk factors have been associated with an increased risk for cardiovascular morbidity and mortality following breast cancer radiotherapy. These include irradiated heart volume (Gyenes *et al.*, 1997), total radiation dose (Gyenes *et al.*, 1998) and fractionation (Paszat *et al.*, 1999) although the latter has not been consistently shown (Marhin *et al.*, 2007; Nilsson *et al.*, 2009). There seems to be an interaction between radiation-related cardiac damage and cardiotoxic drugs such as anthracyclines (Bonneterre *et al.*, 2004), whereas acute cardiotoxicity following combination of left-sided internal mammary chain irradiation and concurrent trastuzumab use has not been clearly shown (Belkacemi *et al.*, 2008; Shaffer *et al.*, 2009). A low overall incidence of cardiovascular adverse effects has also been shown with the use of aromatase inhibitors and tamoxifen (Mouridsen *et al.*, 2007). In terms of coexisting risk factors for developing radiation-induced heart disease (RIHD), there is a significant interaction between pre-existing hypertension, left-breast irradiation and the development of coronary artery disease (Harris *et al.*, 2006).

In an attempt to associate genotypes with phenotypes, our group examined the relationship between late normal-tissue radiation injury in breast cancer patients, early acute radiation reactions and genotype (Giotopoulos *et al.*, 2007). Patients were genotyped at functional single nucleotide polymorphisms (SNPs) in various candidate genes. As the power of genetic studies investigating genotype-phenotype correlations is absolutely dependent on the precise definition of the phenotype, the Late Effects of Normal Tissue-Subjective Objective Management Analytical (LENT-SOMA) scale was used to evaluate radiation injury (Pavy *et al.*, 1995). This scale provides both

subjective and objective analyses and a detailed and specific description of the nature (phenotype) and severity of the injury/-ies that are individually scored. Results showed that homozygosity (TT) for the *TGFb1* (C-509T) gene promoter polymorphism confers a 15-fold increased risk of fibrosis following radiotherapy ( $P=3.10^{-6}$ ) compared with (CC) homozygotes, thus confirming previous independent analyses (Andreassen *et al.*, 2005; Quarmby *et al.*, 2003). Additionally, a 15Gy electron boost and/or the inheritance of X-ray repair cross-complementing 1 (*XRCC1*) (R399Q) SNP contributed to the risk of telangiectasiae. These data suggested distinct underlying genetic and radiobiological pathways responsible for these side-effects.

Based on data from our previous study cohort, we hypothesised a potential association between the presence of cutaneous telangiectasiae, as a late-normal tissue injury following radiotherapy for breast cancer and an increase in the risk for cardiovascular disease.

## **Materials and methods**

### *Patients and methods:*

This report follows a previous study published by this group (Giotopoulos *et al.*, 2007). The study had been undertaken with the participation of patients attending the breast cancer clinics in Leicester Royal Infirmary and Glenfield Hospital, Leicester, UK. The Oncology Department provides services for a population of just under a million, seeing over 3500 new cases per year of which 750 are newly diagnosed patients with breast cancer. All patients with breast cancer having completed adjuvant treatment are followed-up annually for a minimum of 5 years.

Tumour-free breast cancer patients were sequentially recruited via these breast cancer clinics. A total of 153 patients gave written informed consent before entry into the study, and underwent an examination of the affected area and the recognised features of late radiation effects were scored by the SOMA scale using sight and/or by palpation. Of these, fully completed questionnaires were obtained for the majority of patients (n=149) (Figure 1). All were treated more than four years

previously (median follow-up from time of treatment for entire group was 6.1 years). Radiotherapy (6MV photons) was given either after mastectomy or wide local excision (WLE) using tangential opposed fields. Initial surgery was either a wide local excision with nodal sampling/clearance (n=101) or mastectomy (n=45) plus axillary node dissection. Three patients had inoperable tumours.

A variety of radiotherapy dose-fractionation schedules were used (see table I). Two patients discontinued treatment early due to unexpected severe acute reactions. All patients who received an electron boost had a dose of 15 Gy in five fractions in 1 week using 8–12 MeV electrons to the tumour bed. The irradiated area on these patients was similar (between 36 and 80 cm<sup>2</sup>). Patients were asked about potential radiosensitising co-morbid diseases such as diabetes or collagen vascular disorders. They also completed a questionnaire regarding cardiac symptoms and diagnoses.

Cardiovascular disease (CVD) was defined by symptoms and corresponding investigations that demonstrated an abnormality in cardiac function or structure. Vascular disease such as hypertension was not part of the CVD definition although it was considered as a risk factor for it. In this definition we included coronary artery disease, atrial or ventricular dilatation, arrhythmias and congestive cardiac failure. We excluded congenital heart disease or acquired/secondary structural disease. Patients with known congenital (cardiac shunts, previous corrective surgery or persisting structural abnormalities such as valvular heart disease) or acquired/secondary structural heart disease (rheumatic valve disease, mixed aortic valve disease, CABG) prior to radiotherapy were excluded from the current analysis following a detailed review of all available medical information by a Consultant Cardiologist (GPM). Cardiovascular symptoms/diagnoses were checked for all recruited patients using a variety of information systems within University Hospitals Leicester, which provide all secondary care assessment of patients with known or suspected cardiac disease within Leicestershire. Patients who had been investigated with an echocardiogram were highlighted within the Cardiac Investigations' own record system, and the report obtained. The online radiology reports system was screened to highlight any other relevant imaging such as cardiac perfusion scans or

coronary angiography. In addition, all patient records on the HISS (Hospital Information Support System) medical records/clinical coding system were examined to check for clinical codes relating to cardiac diagnoses. All of the medical symptoms reported in oncology follow-up appointments were reviewed using the electronic patient record system (MAISY – Compucorp UK). Death certificates of deceased patients were obtained to check for causes of death related to cardiac damage. Finally, any patient with a positive finding in any of these modalities was investigated further with a full review of their written medical records.

A total of fifteen patients with cardiac disease requiring referral or investigations in secondary or tertiary care and who fulfilled the inclusion criteria were identified. Six patients were excluded on the basis of having pre-existing cardiac disease (Figure II). Two of these patients received left- and four received right-sided radiotherapy. Reasons for exclusion included: cardiomegaly and pulmonary congestion prior to radiotherapy treatment (one patient), CABG pre-radiotherapy treatment (one patient), rheumatic valve disease (one patient) and congenital heart disease (three patients).

To assess whether the CVD patients (n=9) had excessive heart tissue irradiated, simulator planning films from all the patients treated with left-sided radiotherapy were reviewed by three investigators (RPS, JM, GAT). Accurately interpretable information from planning films could only be obtained for 60 of the 71 left-sided patients. Of these, 42 patients had some cardiac outline within the tangential field (defined as 'in-field') and 18 did not. The heart in right-sided patients was automatically regarded as 'out-of-treatment field' (n=78) thus giving an 'out-of-field' denominator of 96 and a total for the group of 138. The *maximum heart distance* (MHD) was measured as a proxy for irradiated volume with established level of agreement. The MHD was measured between the posterior (mediolateral) field border to the most distant heart contour in the beam's-eye view of a tangential treatment beam.

Based on available information, the denominator slightly differed between analysis groups. Treatment side information was available for 149 patients. The presence or absence of telangiectasiae was recorded for 149 patients; however as 12 patients with a telangiectasia score of 1 were excluded in an attempt to reduce inter-examiner bias, the analysis denominator became 137.

*Statistical analysis:* The Fisher's exact test was used to examine the relationship between the various variables as well as the relationship between phenotype and genotype. To test whether hypertension was an independent risk factor, binary logistic regression was used. The SPSS 16.0 (Statistical Package for the Social Sciences) software package was used for the analysis.

*Genotyping:* A full description of the genotyping methods is included in our previous paper (Giotopoulos *et al.*, 2007).

## **Results**

Of the patients with available data (n=149), 6% (9/149) were identified as having cardiovascular disease, between 3 and 12 years post-radiotherapy (mean=6.6 years). Radiotherapy was given following wide local excision (6/9), mastectomy (2/9) or biopsy (1/9). The latter patient had an inoperable tumour.

Of the nine CVD patients (n=9), three had no pre-existing conditions or risk factors for cardiovascular disease. Four patients had a history of hypertension, and three had received anthracycline-based chemotherapy prior to radiation treatment (Table II). One of the patients had a reported history of myocardial infarction seven years pre-radiotherapy treatment. There was no other confirmation of this patient's MI apart from a single entry in the medical records. As it may be particularly important to assess the level of deterioration in patients with pre-existing ischaemic heart disease rather than



only include those who developed evidence of cardiac related symptoms post radiotherapy, we decided to include this patient in our analysis.

All CVD patients had received left-sided radiotherapy (9/71) at a mean age of 65 years, and in all but one (8/9) the heart was within the tangential breast field (mean MHD=1.9 cm, median=0.56 and range 0-3.5cm). The following dose fractionation regimes were used: Seven patients received 45Gy in 20 fractions and two 50Gy in 25 fractions.

The comparison between the CVD patient cohort in whom the heart was within the radiation treatment field to the 'out-of-field group' recorded an OR of 22.3 (95% CI 2.6 - 185.3) (Table III). By measuring the MHD we had the advantage of showing that the effects of radiation are more likely to be due to direct damage to the heart rather than secondary to scattered irradiation. To test whether MHD was a significant predictor of CVD in left-sided patients, we carried out binary logistic regression which demonstrated that MHD shows borderline significance ( $P=0.056$ ). There was no association between the severity of telangiectasiae and MHD in the CVD patient cohort (data not shown).

Five CVD patients who had been treated with wide local excision received a 15Gy boost (Table II). As shown previously (Giotopoulos *et al.*, 2007), the use of electron boost was associated with a higher risk of telangiectasiae (Table IV). Dose per fraction (2 versus >2Gy) was not a predictor for the development of CVD (data not shown). Additionally, our analysis did not show an association between electron boost and the development of cardiovascular disease as this should not give significant additional dose to the heart (Table V). Although numbers limit the conclusions, there is some preliminary evidence that the predictive value of telangiectasiae is higher in women not receiving a boost (data not shown). The use of electron boost and hypofractionation was equal in left versus right patients (Table VI).

A number of factors may influence the risk and severity of late, normal-tissue damage including chemotherapy or hormone therapy. Analysis of the number of patients, who received anthracycline-based adjuvant or neo-adjuvant chemotherapy regimens, revealed that this was not a significant

predictor for CVD in our data. There was also no association between the use of adjuvant hormone therapy (Tamoxifen) and the development of CVD (data not shown).

#### *Right versus left-sided disease and CVD*

A total of 149 patients were included in this group. All the identified patients with cardiovascular disease (9/9) had received radiation treatment to the left side. When the left-sided cohort was compared to the right-sided one (Table III), a statistically significant difference in the risk for CVD was recorded ( $P=0.001$ ; Fisher's exact test). When we carried out the exact same comparison including all documented CVD patients (without excluding patients with previous CVD), the association remained significant (11 of 71 left-sided vs 4 of 78 right-sided patients;  $P=0.03$ ).

#### *Telangiectasiae and CVD*

Presence or absence of telangiectasiae was documented for 149 patients. SOMA scores for telangiectasiae were analysed by comparing affected (SOMA scores 2–3) and unaffected patients (SOMA score 0). As in the previous study, SOMA scores of 1 (subtle, examiner-dependent changes), were excluded from analysis to try and reduce inter-examiner bias. In this cohort 12 patients had a telangiectasiae score of 1 (denominator used in the analysis  $n=137$ ). Thirty-two patients developed telangiectasiae SOMA score  $>1$ , of which 17 received right and 15 left-sided breast irradiation. Five out of the thirty-two (15.6%) patients with telangiectasiae developed CVD, thus recording an OR of 6.3 (95% CI 1.4 – 28.0) when compared to 3 out of 105 (2.9%) patients with CVD in the non-telangiectasiae group (Table III).

When we compared excluded plus included CVD patients (without excluding any patients on the basis of pre-existing structural or functional cardiac disease) who developed telangiectasiae (SOMA score  $> 1$ ) (9/32), to the non-telangiectasiae group (6/105), this recorded an OR of 6.4 (95% CI 2.1-19.9) and a  $P$ -value of 0.004 (Fisher's exact test).

### *Hypertension, smoking, diabetes and CVD*

Pre-existing hypertension was reported in four of the five patients with CVD and significant telangiectasiae (SOMA >1) though this was not found to be an independent risk factor. To test this further, binary logistic regression was performed. The model contained hypertension, laterality and telangiectasia score. The model as a whole explained between 18.8 and 30% of the variance in risk for CVD and correctly classified 80.5% of cases. Telangiectasia score was the only variable that made a statistically significant contribution to the model recording an OR of 6.2 (95% CI 1.1-36.2). Of the entire cohort, 21% of the patients were current or ex-smokers. None of the patients who developed CVD were smokers. There was also no association between a pre-existing history of diabetes and the development of CVD.

### *Genotype-phenotype correlations*

In the current analysis, no association was observed between CVD and the inheritance of alleles of the X-ray repair cross-complementing 1, *XRCC1* (R399Q)SNP, previously linked to radiation-induced telangiectasiae, the fibrosis-associated *TGFb1* (C-509T) gene promoter polymorphism (Giotopoulos *et al.*, 2007) or the *eNOS* (E298D) SNP that confers a weak protective effect against radiotherapy-induced telangiectasiae (Giotopoulos *et al.*, 2008).

### **Discussion:**

Although radiotherapy has significantly increased the overall long-term survival of breast cancer patients (Clarke *et al.*, 2005), normal-tissue radiation injury is increasingly becoming a factor that needs to be taken into account particularly as it can affect quality of life. In everyday clinical practice, there has also been increasing difficulty in estimating and counselling patients about the potential adverse effects of radiation therapy and in particular their long-term risk of RIHD. In an attempt to clarify some of these issues and to assess whether there may be ways in identifying such high risk patients, we analysed data from our cohort of patients. The cardiac disease was confirmed using a

variety of lines of enquiry to reduce the possibility of failing to identify patients with such diagnoses. Although we cannot say with certainty that no new cardiovascular diagnoses were missed, there should be no bias towards patients with left- and right-sided radiotherapy. Our observations indicate a statistically significant association between the long-term risk for CVD and the presence of cutaneous telangiectasiae in this cohort.

RIHD is thought to result from both micro- and macrovasculature damage (Corn *et al.*, 1990). The damage to the microvascular component is initiated by endothelial cell damage within cardiac structures. This is followed by ischaemia which seems to be secondary to capillary swelling and progressive obstruction of the vessel lumen. The damaged area is then replaced by fibrous tissue. Macrovascular damage results from injury to larger vessels, leading to exacerbation of atherosclerotic lesion formation (Seddon *et al.*, 2002). The most important functional consequence is diffuse interstitial myocardial fibrosis which contributes primarily to diastolic dysfunction (Gagliardi *et al.*, 2001). In our analysis, we did not observe an association between the common *TGFb1* (C-509T) gene promoter polymorphism, known to significantly increase the risk for radiation-induced fibrosis, and CVD. It is, however, possible that other gene(s) in the same or different biological pathways may be involved in the pathogenesis of radiation-induced myocardial fibrosis. A recent study by Kuiper *et al.* (2008) provides evidence for a link between vascular damage and fibrosis. It was noted that a shift in the balance between levels of the pro-angiogenic vascular endothelial growth factor (VEGF) and the pro-inflammatory connective tissue growth factor (CTGF) could explain the switch from angiogenesis to fibrosis in patients with proliferative retinopathy.

For both left- and right-sided radiotherapy and with the use of either tangential fields or intensity-modulated radiation therapy (IMRT), most of the heart receives >1Gy dose from scattered irradiation (Li *et al.*, 2000). This low-dose exposure of the whole heart may contribute to the cardiac damage leading to increase in cardiac mortality. Survivors of the atomic bombings in Hiroshima and

Nagasaki also showed evidence for this. They had received a mean uniform single cardiac dose of 4Gy or less and within this cohort subsequent studies showed excess mortality from cardiac disease (Preston *et al.*, 2003). Another example is in men who have received treatment for germ-cell tumours. Any chemotherapy or, radiotherapy to the para-aortic nodes or mediastinum in these individuals, increases their cardiovascular morbidity (van den Belt-Dusebout *et al.*, 2006).

It is interesting to note that in our cohort the CVD morbidity was identified following left-sided irradiation only, in spite of cardiac dose from treatment to the right side. Given the prevalence of CVD in a population with a mean age of 65 years, this finding was surprising as it is not entirely expected that only left-sided patients would have developed post-radiotherapy CVD, unless solely attributable to radiation, which seems unlikely. This may reflect a relatively small cohort.

When we compared well established pre-existing cardiac disease risk factors in left versus right-sided patients, no differences were demonstrated on the basis of hypertension or age between the two groups. Additionally, the majority of the patients who developed CVD and had telangiectasiae were not in fact hypertensive. Smoking was slightly more common in right-sided patients (Table VII). Our data could reflect that the presence of telangiectasiae might be a better predictor for the development of cardiac disease than traditional cardiovascular risk factors and that the mechanism precipitating this is different to that of atherosclerosis.

A number of additional factors may influence the risk and severity of late normal tissue damage. These include, but are not limited to: the size and shape of the breast/ chest wall, the type of surgery and any complications, radiotherapy dose, fractionation and time, adjuvant chemotherapy, whether the patient had a severe, early acute reaction and whether the individual patient was genetically predisposed. The START (Standardisation of Breast radiotherapy) B trial has recently shown that hypofractionating regimes may not necessarily increase late effects (Bentzen *et al.*, 2008). Chemotherapy may increase late effects (Fiets *et al.*, 2003), particularly anthracycline-containing regimens but we did not find a significant association between the two in our current

cohort. There was also no association between the use of adjuvant hormone therapy (Tamoxifen) and the development of CVD.

Telangiectasiae can develop six months to many years following the completion of radiotherapy and occur most often in the boost area or the infra-mammary fold. Telangiectasiae are focal dilatations of post-capillary venules mainly, but also occasionally of the capillaries and arterioles of the subpapillary plexus (Requena and Sanguenza, 1997). They occur in an atrophic dermis under a thinned epidermis and present as areas of reddish discolouration (Archambeau *et al.*, 1995). The mechanisms by which telangiectasiae develop, are not fully understood but they seem to be both genetically and mechanistically-predetermined. Their severity is influenced by both treatment- and patient-related factors. There are some fundamental radiobiological data describing macroscopic and histological effects of chronic radiation damage using animal models, mainly rats (Trott, 1984). The primary effect of radiation is DNA damage and there is evidence that the most vulnerable cells are endothelial. Models of telangiectasiae formation show that impaired tissue microcirculation drainage leads to stasis in the collecting venules which results in the expansion of capillaries and venules, characteristic of telangiectasiae. In our analysis, we observed a statistically significant association between the long-term risk for cardiovascular disease and the presence of cutaneous telangiectasiae (Table III). Interestingly, the significance of this correlation was maintained and became even greater when we included all the identified CVD patients with no exclusions. Although telangiectasiae in most cases are only unsightly, our findings could suggest a novel use as a marker and a predictor of future cardiac-related complications. The recognition of this association, early, may allow the clinician to modify the other cardiac risk factors in these patients and therefore decrease their risk of significant cardiac events. It could also have a role as a screening tool for earlier diagnosis and treatment in this setting.

Previous studies have shown potential common genetic and radiobiological pathways involved in the development of late, normal-tissue complications following radiotherapy (Andreassen *et al.*, 2005; Giotopoulos *et al.*, 2007; Quarmby *et al.*, 2003). A potential genotypic association between cutaneous telangiectasiae and the development of RIHD would be intriguing as it may confer a number of clinical implications. This would raise the question whether we might be able to identify patients who should be recommended to have partial breast irradiation, and/or IMRT, or offer different surgical options such as a mastectomy without radiotherapy.

Our conclusions are based on a relatively small cohort and therefore these findings need to be replicated. There are a number of potential confounders that we have not been able to assess due to the design of the study including Body Mass Index and a family history of cardiovascular disease. A potential problem is that the cohort could have had an unexpected degree of sub-clinical cardiovascular disease, though the lack of previously documented CVD events in the group receiving right-sided radiotherapy mitigates against this. Although there was close consideration to accurately define the inclusion criteria for CVD diagnoses, a number of patients with additional cardiovascular events could have been lost to follow-up. The significance of the association between telangiectasiae and CVD was, however, maintained even with or without exclusions for previous CVD. A possible source of false association could be an undetected difference between the groups receiving left- or right-sided treatment, but in this cohort there was no difference in hypertension, telangiectasiae or other variables except CVD. Smoking was slightly more common in right-sided patients

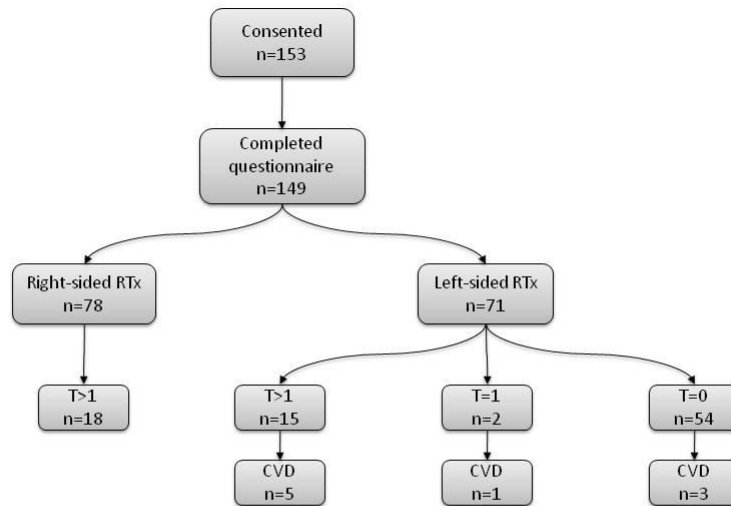
Our data demonstrate a statistically significant association between the development of telangiectasiae as late normal-tissue injury following radiotherapy and the risk for cardiovascular disease. The most parsimonious explanation would be that a propensity for the development of telangiectasiae and CVD are part of a common biological pathway on the basis of a genetically predisposed endothelium. If this conclusion is correct, we would expect identification of genes that

prove the association. Further studies are required to explore the potential mechanisms and identification of individuals at increased risk of RIHD to maintain a reasonable therapeutic benefit for radiotherapy in breast cancer.

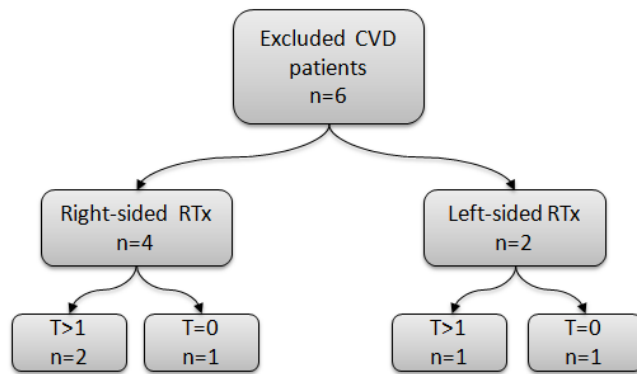
### **Acknowledgements**

We would like to thank Dr Peter Lacy for reviewing the manuscript and for his helpful comments. Dr George Tanteles is supported by Breast Cancer Campaign.





**Figure I:** Flowchart showing patients included in the analysis. RTx: radiation therapy; T: telangiectasia score; CVD: cardiovascular disease.



**Figure II:** Flowchart showing excluded patients with documented cardiovascular disease. One patient with a telangiectasia score = 1 is not shown. CVD: cardiovascular disease; RTx: radiation therapy.

**Table I** Summary of total radiotherapy doses including boost

Total dose (Gy)	No. of fractions	No. of patients	15 Gy electron boost (no. of patients)	
			Boost	No boost
34 <sup>*</sup>	17	1	1	0
38 <sup>*</sup>	17	1	1	0
40	15	9	1	8
45	20	111	65	46
50	25	27	0	27
		Total=149	Total=68	Total=81

\* Patients who did not complete the planned radiotherapy schedule due to a severe early reaction to radiotherapy.

**Table II** Summary of patients (n=9) with evidence of new CVD following radiation therapy

Patients with pre-existing conditions or risk factors for CVD (side/age at RTx)		Indications	Investigations	Findings (years after RTx)	RTx Dose
1.	None (L/69)	SOB, palpitations	ECG, ECHO, CT thorax	Mild dilatation of RV and mild RV function impairment (7)	45Gy in 20 fractions +boost
2.	HT, anthracycline-based chemotherapy (L/62)	SOBOE	ECG,ECHO	Borderline LVH, CCF (5)	45Gy in 20 fractions +boost
3.	Treated SVT (L/58)	Angina, MI five years post RTx	ECG, ECHO, cardiac catheterisation, coronary angiography	Mild LA dilatation, mild LAD and diagonal branch disease (5)	45Gy in 20 fractions +boost
4.	HT, anthracycline-based chemotherapy (L/66)	Palpitations	ECG, ECHO	LV dysfunction, CCF and AF (4)	50Gy in 25 fractions
5.	MI, anthracycline-based chemotherapy (L/68)	SOBOE, syncope	ECG, ECHO, myocardial perfusion scan	Mildly impaired LV function, minor fixed anterior ischemia and possible fixed inferior ischaemia (12)	45Gy in 20 fractions
6.	HT, NIDDM (L/47)	Palpitations	ECG, ECHO	Tachy-brady syndrome, AF (11)	45Gy in 20 fractions
7.	None (L/69)	SOB	ECG, ECHO	Borderline LA dilatation (8)	45Gy in 20 fractions +boost
8.	HT (L/75)	SOBOE	ECG, ECHO	Mild LA dilatation (3)	45Gy in 20 fractions +boost
9.	None (L/78)	SOB	ECG, ECHO	Mild LVH (5)	50Gy in 25 fractions

AF: atrial fibrillation, CCF: congestive cardiac failure, CVD: cardiovascular disease, ECG: electrocardiogram, ECHO: echocardiogram, Gy: Gray, HT: hypertension, LAD: left anterior descending artery, LA: left atrium, LVH: left ventricular hypertrophy, MI: myocardial infarction, NIDDM: Non-insulin dependent diabetes mellitus, RTx: radiation therapy, RV: right ventricle, SOB: shortness of breath, SOBOE: shortness of breath on exertion, SVT: supraventricular tachycardia.

**Table III** Summary of results

	Cardiac disease <sup>a</sup>	P-value (test)	Odds ratio (95% CI) <sup>b</sup>
<b>RTx Side (n=149):</b>			
<b>Left</b>	9/71	0.001	11.2 (1.3-90.6)
		(Fisher's exact)	
<b>Right</b>	0/78		
<b>Telangiectasiae &gt;1 (n=137):</b>			
<b>Yes</b>	5/32	0.017	6.3 (1.4 – 28.5)
		(Fisher's exact)	
<b>No</b>	3/105		
<b>Field (n=138):</b>			
<b>In</b>	8/42	<0.001	22.3 (2.6 - 185.3)
		(Fisher's exact)	
<b>Out</b>	1/96		
<b>'In-field' and telangiectasiae &gt;1 (n=138):</b>			
<b>Yes</b>	5/12	<0.001	29.3(5.8 - 148.2)
		(Fisher's exact)	
<b>No</b>	3/126		

<sup>a</sup>Numbers of patients with CVD are calculated as complementary proportions of the total cohort, <sup>b</sup>95% confidence intervals; RTx: radiation therapy. Based on available information, the denominator slightly differs between analysis groups. Treatment side information was available for 149 patients. The presence or absence of telangiectasiae was recorded for 149 patients, however, when patients with a telangiectasia score of 1 were excluded in an attempt to reduce inter-examiner bias, the analysis denominator became 137. Interpretable information via planning films could be obtained for 60 left-sided patients. The heart in right-sided patients was by definition considered as 'out-of treatment field' thus giving an overall denominator for the group of 138. All the CVD patients were included in these groups.

**Table IV** Comparison of electron boost and telangiectasiae formation in the entire cohort

	Telangiectasia score >1 (n=32)	
	Yes	No
Boost	21	41
No boost	11	64
	Total=137	
<i>P</i> -value (test)	0.008 ( $\chi^2$ )	

Twelve patients with a telangiectasia SOMA score of 1 (subtle, examiner-dependent changes), were excluded from analysis thus reducing the denominator from 149 to 137. Of the excluded 12 patients, six did and six didn't receive an electron boost.

**Table V** Use of electron boost and CVD

	CVD (n=9)	
	Yes	No
Boost	5	63
No boost	4	77
	Total=149	
<i>P</i> -value (test)	0.73 (Fisher's exact)	

CVD: Cardiovascular disease

**Table VI** Use of electron boost and hypofractionation schemes in patients receiving RTx to the left versus the right

	RTx side	
	Left	Right
Electron Boost		
Yes	36	32
No	35	46
	Total=149	
P-value (test)	0.24 ( $\chi^2$ )	
<hr/>		
Dose per fraction (Gy)		
2	14	14
>2	57	64
	Total=149	
P-value (test)	0.72 ( $\chi^2$ )	

RTx: Radiation therapy, Gy: Gray.



**Table VII** Comparison of known pre-existing cardiac risk factors in left versus right radiotherapy treated patients

RTx Side (n=149):	Mean (yr) age	Hypertension		Smoking		
		Yes	No	Yes	Ex-	No
Left	55.9 (SD 10.8)	10	61	7	2	58
Right	57.8 (SD 10.0)	7	71	12	10	52
<i>P</i> -value (test)	0.36 (Mann-Whitney)	0.33 ( $\chi^2$ )		0.04 ( $\chi^2$ )		

SD: Standard deviation.

## References

- Andreassen CN, Alsner J, Overgaard J, Herskind C, Haviland J, Owen R, Homewood J, Bliss J, Yarnold J (2005) TGFB1 polymorphisms are associated with risk of late normal tissue complications in the breast after radiotherapy for early breast cancer. *Radiother Oncol* **75**: 18-21
- Archambeau JO, Pezner R, Wasserman T (1995) Pathophysiology of irradiated skin and breast. *Int J Radiat Oncol Biol Phys* **31**: 1171-85
- Belkacemi Y, Gligorov J, Ozsahin M, Marsiglia H, De Lafontan B, Laharie-Mineur H, Aimard L, Antoine EC, Cutuli B, Namer M, Azria D (2008) Concurrent trastuzumab with adjuvant radiotherapy in HER2-positive breast cancer patients: acute toxicity analyses from the French multicentric study. *Ann Oncol* **19**: 1110-6
- Bentzen SM, Agrawal RK, Aird EG, Barrett JM, Barrett-Lee PJ, Bliss JM, Brown J, Dewar JA, Dobbs HJ, Haviland JS, Hoskin PJ, Hopwood P, Lawton PA, Magee BJ, Mills J, Morgan DA, Owen JR, Simmons S, Sumo G, Sydenham MA, Venables K, Yarnold JR (2008) The UK Standardisation of Breast Radiotherapy (START) Trial B of radiotherapy hypofractionation for treatment of early breast cancer: a randomised trial. *Lancet* **371**: 1098-107
- Bentzen SM, Dorr W, Anscher MS, Denham JW, Hauer-Jensen M, Marks LB, Williams J (2003) Normal tissue effects: reporting and analysis. *Semin Radiat Oncol* **13**: 189-202
- Bonneterre J, Roche H, Kerbrat P, Fumoleau P, Goudier MJ, Fargeot P, Montcuquet P, Clavere P, Barats JC, Monnier A, Veyret C, Datchary J, Van Praagh I, Chapelle-Marcillac I (2004) Long-term cardiac follow-up in relapse-free patients after six courses of fluorouracil, epirubicin, and cyclophosphamide, with either 50 or 100 mg of epirubicin, as adjuvant therapy for node-positive breast cancer: French adjuvant study group. *J Clin Oncol* **22**: 3070-9
- Clarke M, Collins R, Darby S, Davies C, Elphinstone P, Evans E, Godwin J, Gray R, Hicks C, James S, MacKinnon E, McGale P, McHugh T, Peto R, Taylor C, Wang Y (2005) Effects of radiotherapy and of differences in the extent of surgery for early breast cancer on local recurrence and 15-year survival: an overview of the randomised trials. *Lancet* **366**: 2087-106
- Corn BW, Trock BJ, Goodman RL (1990) Irradiation-related ischemic heart disease. *J Clin Oncol* **8**: 741-50
- Darby S, McGale P, Peto R, Granath F, Hall P, Ekbom A (2003) Mortality from cardiovascular disease more than 10 years after radiotherapy for breast cancer: nationwide cohort study of 90 000 Swedish women. *BMJ* **326**: 256-7
- Fiets WE, van Helvoirt RP, Nortier JW, van der Tweel I, Struikmans H (2003) Acute toxicity of concurrent adjuvant radiotherapy and chemotherapy (CMF or AC) in breast cancer patients. a prospective, comparative, non-randomised study. *Eur J Cancer* **39**: 1081-8
- Gagliardi G, Lax I, Rutqvist LE (2001) Partial irradiation of the heart. *Semin Radiat Oncol* **11**: 224-33
- Giotopoulos G, Armstrong C, Osman A, Peat I, Symonds RP, Talbot CJ (2008) Refining the evidence for GSTA1 and eNOS genetic effects on risk of radiotherapy-induced telangiectasia. *Int J Cancer* **123**: 2973-4

Giotopoulos G, Symonds RP, Foweraker K, Griffin M, Peat I, Osman A, Plumb M (2007) The late radiotherapy normal tissue injury phenotypes of telangiectasia, fibrosis and atrophy in breast cancer patients have distinct genotype-dependent causes. *Br J Cancer* **96**: 1001-7

Gyenes G, Gagliardi G, Lax I, Fornander T, Rutqvist LE (1997) Evaluation of irradiated heart volumes in stage I breast cancer patients treated with postoperative adjuvant radiotherapy. *J Clin Oncol* **15**: 1348-53

Gyenes G, Rutqvist LE, Liedberg A, Fornander T (1998) Long-term cardiac morbidity and mortality in a randomized trial of pre- and postoperative radiation therapy versus surgery alone in primary breast cancer. *Radiother Oncol* **48**: 185-90

Harris EE, Correa C, Hwang WT, Liao J, Litt HI, Ferrari VA, Solin LJ (2006) Late cardiac mortality and morbidity in early-stage breast cancer patients after breast-conservation treatment. *J Clin Oncol* **24**: 4100-6

Li JG, Williams SS, Goffinet DR, Boyer AL, Xing L (2000) Breast-conserving radiation therapy using combined electron and intensity-modulated radiotherapy technique. *Radiother Oncol* **56**: 65-71

Marhin W, Wai E, Tyldesley S (2007) Impact of fraction size on cardiac mortality in women treated with tangential radiotherapy for localized breast cancer. *Int J Radiat Oncol Biol Phys* **69**: 483-9

Mouridsen H, Keshaviah A, Coates AS, Rabaglio M, Castiglione-Gertsch M, Sun Z, Thurlimann B, Mauriac L, Forbes JF, Paridaens R, Gelber RD, Colleoni M, Smith I, Price KN, Goldhirsch A (2007) Cardiovascular adverse events during adjuvant endocrine therapy for early breast cancer using letrozole or tamoxifen: safety analysis of BIG 1-98 trial. *J Clin Oncol* **25**: 5715-22

Nilsson G, Holmberg L, Garmo H, Terent A, Blomqvist C (2009) Radiation to supraclavicular and internal mammary lymph nodes in breast cancer increases the risk of stroke. *Br J Cancer* **100**: 811-6

O'Sullivan B, Levin W (2003) Late radiation-related fibrosis: pathogenesis, manifestations, and current management. *Semin Radiat Oncol* **13**: 274-89

Paszat LF, Mackillop WJ, Groome PA, Boyd C, Schulze K, Holowaty E (1998) Mortality from myocardial infarction after adjuvant radiotherapy for breast cancer in the surveillance, epidemiology, and end-results cancer registries. *J Clin Oncol* **16**: 2625-31

Paszat LF, Mackillop WJ, Groome PA, Schulze K, Holowaty E (1999) Mortality from myocardial infarction following postlumpectomy radiotherapy for breast cancer: a population-based study in Ontario, Canada. *Int J Radiat Oncol Biol Phys* **43**: 755-62

Paszat LF, Vallis KA, Benk VM, Groome PA, Mackillop WJ, Wielgosz A (2007) A population-based case-cohort study of the risk of myocardial infarction following radiation therapy for breast cancer. *Radiother Oncol* **82**: 294-300

Pavy JJ, Denekamp J, Letschert J, Littbrand B, Mornex F, Bernier J, Gonzales-Gonzales D, Horiot JC, Bolla M, Bartelink H (1995) EORTC Late Effects Working Group. Late effects toxicity scoring: the SOMA scale. *Radiother Oncol* **35**: 11-5

Preston DL, Shimizu Y, Pierce DA, Suyama A, Mabuchi K (2003) Studies of mortality of atomic bomb survivors. Report 13: Solid cancer and noncancer disease mortality: 1950-1997. *Radiat Res* **160**: 381-407

Quarmanby S, Fakhoury H, Levine E, Barber J, Wylie J, Hajeer AH, West C, Stewart A, Magee B, Kumar S (2003) Association of transforming growth factor beta-1 single nucleotide polymorphisms with radiation-induced damage to normal tissues in breast cancer patients. *Int J Radiat Biol* **79**: 137-43

Requena L, Sanguenza OP (1997) Cutaneous vascular anomalies. Part I. Hamartomas, malformations, and dilation of preexisting vessels. *J Am Acad Dermatol* **37**: 523-49; quiz 549-52

Rutqvist LE, Johansson H (1990) Mortality by laterality of the primary tumour among 55,000 breast cancer patients from the Swedish Cancer Registry. *Br J Cancer* **61**: 866-8

Seddon B, Cook A, Gothard L, Salmon E, Latus K, Underwood SR, Yarnold J (2002) Detection of defects in myocardial perfusion imaging in patients with early breast cancer treated with radiotherapy. *Radiother Oncol* **64**: 53-63

Shaffer R, Tyldesley S, Rolles M, Chia S, Mohamed I (2009) Acute cardiotoxicity with concurrent trastuzumab and radiotherapy including internal mammary chain nodes: A retrospective single-institution study. *Radiother Oncol* **90**: 122-6

Stewart JR, Fajardo LF, Gillette SM, Constine LS (1995) Radiation injury to the heart. *Int J Radiat Oncol Biol Phys* **31**: 1205-11

Taylor CW, Povall JM, McGale P, Nisbet A, Dodwell D, Smith JT, Darby SC (2008) Cardiac dose from tangential breast cancer radiotherapy in the year 2006. *Int J Radiat Oncol Biol Phys* **72**: 501-7

Trott KR (1984) Chronic damage after radiation therapy: challenge to radiation biology. *Int J Radiat Oncol Biol Phys* **10**: 907-13

van den Belt-Dusebout AW, Nuver J, de Wit R, Gietema JA, ten Bokkel Huinink WW, Rodrigus PT, Schimmel EC, Aleman BM, van Leeuwen FE (2006) Long-term risk of cardiovascular disease in 5-year survivors of testicular cancer. *J Clin Oncol* **24**: 467-75

van der Kogel AJ (1993) Radiobiology of normal tissues. In *Basic Clinical Radiobiology* Steel GG (ed) pp 99–107, London: Arnold