

## THE FREQUENCY OF UNIPARENTAL DISOMY IN PRADER-WILLI SYNDROME

### Implications for Molecular Diagnosis

MARIA J. MASCARI, PH.D., WAYNE GOTTLIEB, M.S., PETER K. ROGAN, PH.D.,  
MERLIN G. BUTLER, M.D., PH.D., DAVID A. WALLER, M.D., JOHN A.L. ARMOUR, PH.D.,  
ALEC J. JEFFREYS, PH.D., ROGER L. LADDA, M.D., AND ROBERT D. NICHOLLS, D.Phil.

**Abstract Background.** Prader-Willi syndrome is a genetic disorder characterized by infantile hypotonia, obesity, hypogonadism, and mental retardation, but it is difficult to diagnose clinically in infants and young children. In about two thirds of patients, a cytogenetically visible deletion can be detected in the paternally derived chromosome 15 (15q11q13). Recently, patients with Prader-Willi syndrome have been described who do not have the cytogenetic deletion but instead have two copies of the 15q11q13 region that are inherited from the mother (with none inherited from the father). This unusual form of inheritance is known as maternal uniparental disomy. Using molecular genetic techniques, we sought to determine the frequency of uniparental disomy in Prader-Willi syndrome.

**Methods.** We performed molecular analyses using DNA markers within 15q11q13 and elsewhere on chromosome 15 in 30 patients with Prader-Willi syndrome who had no cytogenetically visible deletion. We also

studied their parents. Three patients with Prader-Willi syndrome who had a cytogenetic deletion served as controls.

**Results.** In 18 of the 30 patients without a cytogenetic deletion (60 percent), we demonstrated the presence of maternal uniparental disomy for chromosome 15 and its association with advanced maternal age. In another eight patients (27 percent), we identified large molecular deletions. The remaining four patients (13 percent) had evidence of normal biparental inheritance for chromosome 15; three of these patients were the only ones in the study who had some atypical clinical features.

**Conclusions.** In about 20 percent of all cases, Prader-Willi syndrome results from the inheritance of both copies of chromosome 15 from the mother (maternal uniparental disomy). With the combined use of cytogenetic and molecular techniques, the genetic basis of Prader-Willi syndrome can be identified in up to 95 percent of patients. (N Engl J Med 1992;326:1599-607.)

**P**RADER-WILLI syndrome is a complex developmental and neurobehavioral genetic disorder affecting approximately 1 in 10,000 newborns.<sup>1</sup> It represents the most common dysmorphic form of obesity, with more than 700 cases reported.<sup>2</sup> Clinical diagnosis of Prader-Willi syndrome can be difficult because of the subtle nature of the dysmorphic features and the wide discrepancy between the clinical presentation in infancy and that seen in childhood, adolescence, and adulthood.<sup>1,3,4</sup> The first phase of the disorder is characterized by hypotonia, with a poor sucking reflex, hypogonadism, and subtle dysmorphic features. The second phase typically begins between two and four years of age, with the development of hyperphagia (leading to obesity) and extreme changes in temperament. Other features include short stature, small hands and feet, and various degrees of mental retardation or learning disability.<sup>1,2</sup> Early diagnosis of Prader-Willi syndrome is essential for medical and nutritional management as well as for appropriate genetic counseling.

Chromosome 15 was first implicated in the etiologic process of Prader-Willi syndrome by reports of a translocation, t(15;15), in several patients.<sup>2,5</sup> High-resolution cytogenetic studies subsequently showed

Chromosome 15 was first implicated in the etiologic process of Prader-Willi syndrome by reports of a translocation, t(15;15), in several patients.<sup>2,5</sup> High-resolution cytogenetic studies subsequently showed

#### Glossary

**Aneusomic or aneuploid** Describing a cell in which the chromosome number is not an exact multiple of the haploid number

**Biparental inheritance** Inheritance of one maternal and one paternal allele of a gene (apparently normal mendelian inheritance)

**Genomic imprinting** Differential modification and expression of alleles of a gene, dependent on the sex of the parent of origin

**Heterodisomy** Inheritance of two different copies of a gene or chromosome from one parent

**Heteromorphism** Differences in morphology between homologous chromosomes

**Isodisomy** Inheritance of two identical copies of a gene or chromosome from one parent

**Nondisjunction** Failure of homologous chromosomes or chromatids to separate during meiosis or mitosis

**Nullisomic gamete** A gamete lacking a specific chromosome, as contrasted with a disomic gamete, which contains an extra copy of a specific chromosome

**Uniparental disomy** Inheritance of two copies of a gene or chromosome from one parent (nonmendelian inheritance)

**Variable number of tandem repeats (VNTR)** A type of DNA polymorphism created by the tandem arrangement of multiple copies of short DNA sequences that results in a high degree of polymorphism

From the Division of Genetics, Department of Pediatrics, Milton S. Hershey Medical Center, College of Medicine, Pennsylvania State University, Hershey (M.J.M., P.K.R., R.L.L.); the Department of Neuroscience, University of Florida Brain Institute, and the Division of Genetics, Department of Pediatrics, and Center for Mammalian Genetics, University of Florida College of Medicine, Gainesville (W.G., R.D.N.); the Division of Genetics, Department of Pediatrics, Vanderbilt University School of Medicine, Nashville (M.G.B.); the Division of Child and Adolescent Psychiatry, Department of Psychiatry, University of Texas, Southwestern Medical Center, Dallas (D.A.W.); and the Department of Genetics, University of Leicester, Leicester, United Kingdom (J.A.L.A., A.J.J.). Address reprint requests to Dr. Mascari at the Division of Genetics, Department of Pediatrics, Milton S. Hershey Medical Center, 500 University Dr., Hershey, PA 17033.

Supported by a Basil O'Connor Starter Scholar Research Award (5-802) from the March of Dimes Birth Defects Foundation and the American Heart Association, Florida Affiliate (R.D.N.). Dr. Armour is a Wellcome Trust postdoctoral fellow, and Dr. Nicholls is a Pew Scholar in the Biomedical Sciences.

Presented in part at the American Society of Human Genetics meeting, Cincinnati, October 14-20, 1990; the NATO Advanced Research Workshop on Prader-Willi syndrome and other chromosome 15q deletion disorders, Noordwijkerhout, the Netherlands, May 1991; and the International Congress of Human Genetics meeting, Washington, D.C., October 6-11, 1991.

that 55 to 70 percent of affected patients have a deletion of 15q11q13, a finding that has aided in the early diagnosis of the disorder.<sup>2,6,7</sup> Other rearrangements of 15q11q13 have been identified, although they occur in less than 4 percent of patients with Prader-Willi syndrome.<sup>2,7</sup> The remaining 25 to 40 percent of patients have no detectable alteration in chromosome 15.<sup>2,7</sup>

A similar chromosome 15 deletion has been found in Angelman syndrome, a clinically distinct neurobehavioral disorder characterized by severe mental retardation, lack of speech, inappropriate paroxysms of laughter, seizures, ataxic gait, and puppet-like movements of the limbs.<sup>8-12</sup> The critical deletion regions in both syndromes appear to overlap substantially in the majority of affected patients at the cytogenetic<sup>11</sup> and molecular<sup>13-15</sup> level. However, the parental origin of the deletion differs: only paternal deletions occur in Prader-Willi syndrome,<sup>16-18</sup> and only maternal deletions have been demonstrated in Angelman syndrome.<sup>10,11,19</sup> The dependence of the clinical outcome on parental origin is strongly supported by the molecular demonstration in Prader-Willi syndrome of maternal uniparental disomy (in which both copies of chromosome 15 are inherited from the mother and none are inherited from the father).<sup>20</sup> Paternal uniparental disomy has been shown in Angelman syndrome.<sup>21,22</sup> These observations imply that the phenotypic expression of both syndromes is determined by the parental origin of a gene or genes within chromosome 15q11q13. The differential modification and expression of alleles of a gene dependent on parental origin are known as genomic imprinting. Prader-Willi and Angelman syndromes are the clearest examples to date of genomic imprinting in humans.<sup>20,23-25</sup> This differential expression has subsequently been confirmed by two additional studies,<sup>26,27</sup> and a recent editorial in the *Journal* reviewed the clinical implications of genomic imprinting.<sup>28</sup>

Since molecular analysis has revealed large deletions of 15q11q13 in many patients with Prader-Willi syndrome,<sup>10,13,18</sup> and preliminary studies in patients without this deletion have shown uniparental disomy,<sup>20</sup> we designed a study to determine the frequency of uniparental disomy in patients who have Prader-Willi syndrome but not the classic chromosome 15q11q13 deletion.

## METHODS

### Patients

To be eligible for the study, patients had to have features considered essential for the diagnosis of Prader-Willi syndrome, as documented by a clinical evaluation or a study of their medical records<sup>1,2,29</sup>; both biologic parents available for study; and no evidence of a chromosome 15q11q13 deletion on the basis of a cytogenetic evaluation. Thirty patients met the criteria and were included in the study. Three patients (one female and two male) with cytogenetic deletions of chromosome 15 were included in the study as controls. The study population included one set of monozygotic twins concordant for Prader-Willi syndrome (Patients 7a and 7b), one black

patient (Patient 28), one patient (Patient 14) with a spontaneous balanced translocation (t(8;18)(p24.1;q23)), and one patient (Patient 26) mosaic for a marker chromosome of unknown origin. There were 15 male and 15 female patients, ranging from 2 to 41 years of age. Patients 2, 3, 4, 5, and 6 have been described in a previous report.<sup>30</sup> In addition, preliminary molecular findings in Patients 1 and 2 have been reported previously.<sup>20</sup>

### Cytogenetic and Molecular Studies

Chromosomal studies were carried out in each patient at the 550-band level with the use of standard techniques.<sup>17,31,32</sup> For the molecular studies, genomic DNA was extracted from peripheral-blood lymphocytes,<sup>33</sup> and 3  $\mu$ g of DNA was digested with the appropriate restriction enzyme. The DNA was then separated by agarose-gel electrophoresis, transferred to nylon membranes, and prehybridized and hybridized with DNA probes under standard conditions.<sup>18</sup> Membranes were washed at 56°C, or 49°C for probe IR4-3R, in 0.1  $\times$  saline sodium citrate buffer (0.015 mol of sodium chloride per liter, 0.0015 mol of sodium citrate per liter, and 0.1 percent sodium dodecyl sulfate) for one hour.

### DNA Probes

Seven DNA probes specific for chromosome 15q11q13 were used in the molecular studies (the loci defined are given in parentheses): 34 (D15S9), 3-21 (D15S10), IR4-3R (D15S11), IR10-1 (D15S12), 189-1 (D15S13), IR39d — a *SacI/HindIII* subfragment of IR39 (D15S18) — and CMW-1 (D15S24).<sup>18,34,35</sup> The restriction-fragment-length polymorphisms (RFLPs) for these probes have been described previously.<sup>18,20,35</sup> In addition, a three-allele RFLP for IR4-3R with *KpnI*-digested DNA was analyzed after separation by field-inversion gel electrophoresis (unpublished data). Several genomic probes distal to 15q11q13, MS1-14 (defining locus D15S1),<sup>36</sup> DP151 (defining locus D15S2),<sup>37</sup> and MS620 (defining locus D15S86), a variable-number tandem repeat (VNTR) probe that maps near the telomere of chromosome 15,<sup>38</sup> were also used. (MS620 has been deposited with the United Kingdom Human Genome Mapping Project Resource Center, CRC, Watford Rd., Harrow, Middlesex HA1 3UJ, United Kingdom, and can be obtained from Dr. Gabrielle Fisher.) The number of copies of each 15q11q13-specific sequence of DNA was determined by comparison with an internal standard, H2-26 (defining locus D13S28), a DNA probe specific for chromosome 13 with *HindIII*-digested DNA.<sup>14,20,39</sup> Each proband in this study inherited one maternal and one paternal allele for 3'HVR (defining locus D16S85), a VNTR probe specific for chromosome 16<sup>40</sup> — a pattern consistent with biologic parentage.

### Statistical Analysis

Statistical analysis of parental ages was carried out with analysis of variance.

## RESULTS

### Molecular Deletions in Prader-Willi Syndrome

We detected molecular deletions in 8 of 30 patients with Prader-Willi syndrome (27 percent) without a cytogenetic deletion on the basis of RFLP studies (Fig. 1A) and the determination of the number of copies per genome of each DNA probe (Fig. 1B). The deletions encompassed either five DNA probes specific for the 15q11q13 chromosomal region (IR4-3R, 189-1, 34, 3-21, and IR10-1) or these five probes plus a proximal probe, IR39d.<sup>41</sup> Since similar deletions of these markers in patients with Angelman syndrome can be detected cytogenetically,<sup>14</sup> the deletions reported here in Prader-Willi syndrome may be detectable cytogenetically at a higher level of resolution. One patient

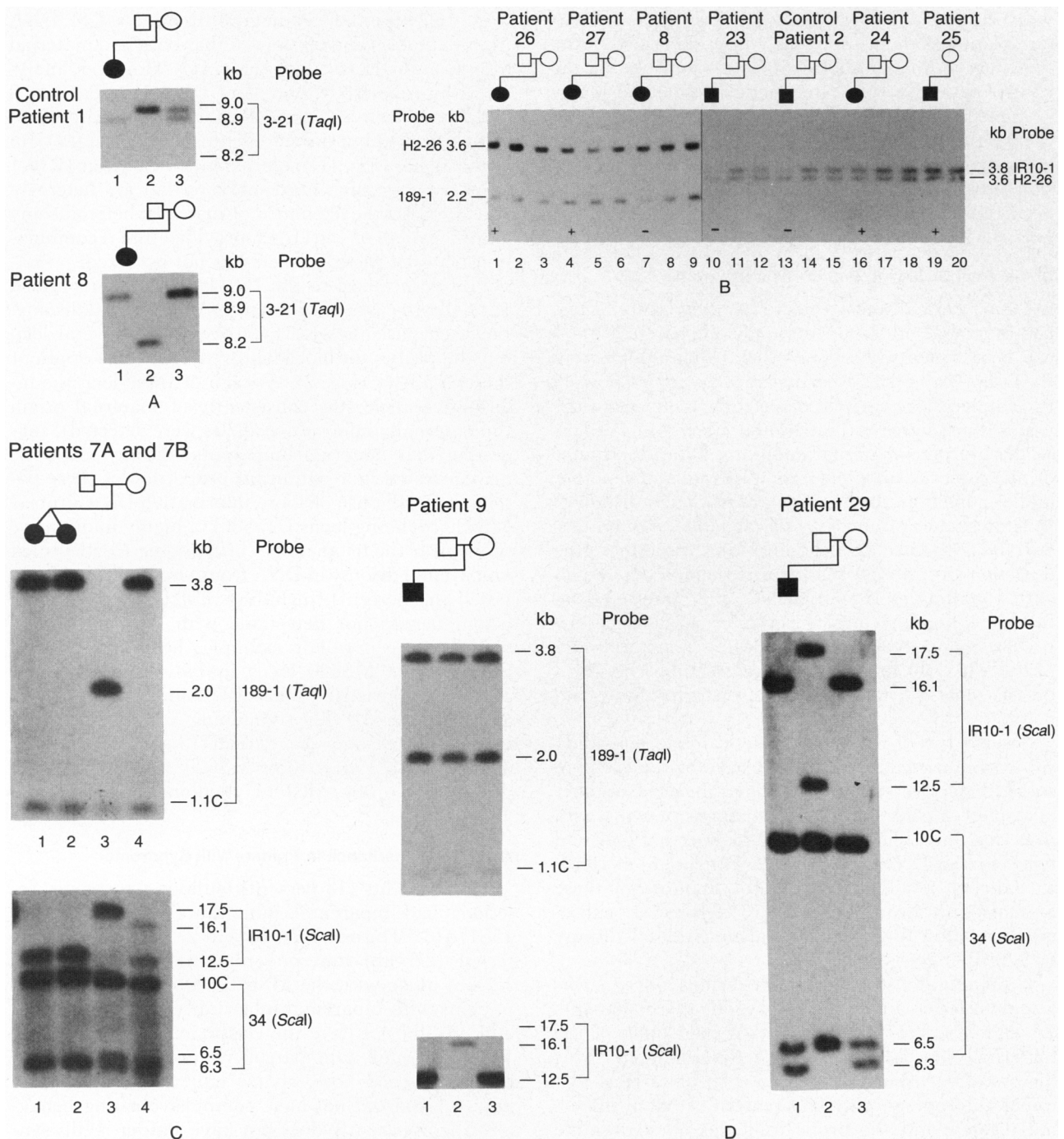


Figure 1. Representative Autoradiographs Obtained by Molecular Analysis of DNA Patients with Prader-Willi Syndrome with DNA Probes Specific for Chromosome 15q11q13.

With the exception of Panel B, the various enzymes used are given in parentheses; *HindIII* was used with all probes shown in Panel B. The sizes of the DNA fragments are listed in kilobases (kb). C represents a constant, nonpolymorphic fragment. Probands are denoted by solid symbols. Panel A shows paternal deletions by RFLPs in two families. Both probands (lane 1) receive a single copy of a maternal allele (lane 3), but no paternal alleles (lane 2). In Panel B, the number of copies per genome of chromosome 15q11q13-specific probes is compared with the number of copies per genome of a chromosome 13 control probe (H2-26). For each proband, a deletion is indicated by a minus sign, and a two-copy hybridization by a plus sign. Panel C shows uniparental disomy in the monozygotic twins, as detected by probe 189-1 (upper autoradiograph). Use of probe IR10-1 (lower autoradiograph) showed that the specific type of uniparental disomy present was isodisomy, whereas probe 34 was uninformative. Panel D shows uniparental disomy in two additional probands with Prader-Willi syndrome, as detected by probe IR10-1, and heterozygosity (parental origin undetermined), as detected by probes 189-1 and 34.

with Prader-Willi syndrome had a smaller molecular deletion than has previously been described in the literature<sup>41</sup> (and unpublished data), and one of the control patients with a cytogenetic deletion had a larger molecular deletion. Analysis of DNA from 9 of the 11 patients with Prader-Willi syndrome with a cytogenetic (the three controls) or a molecular deletion did identify the parental origin; all these deletions occurred on the paternally derived chromosome 15 (Fig. 1A), as found in previous studies.<sup>16-18</sup>

#### Uniparental Disomy in Prader-Willi Syndrome

Uniparental disomy refers to the inheritance of two copies of a genetic locus from only one parent<sup>20,42</sup> and can be detected when the mother's alleles differ from the father's alleles at a particular locus. The following three inheritance patterns detected by molecular analysis are indicative of uniparental disomy in Prader-Willi syndrome: maternal isodisomy,<sup>42</sup> the inheritance of two copies of an allele from a heterozygous mother and of none from the father; maternal heterodisomy,<sup>20</sup> the inheritance of one copy of each allele from a heterozygous mother and of none from the father (the detection of this pattern requires a marker system with a minimum of three alleles); and maternal disomy, the inheritance of two copies of a gene at a particular locus only from the mother, with apparent homozygosity of both mother and child. The third pattern does not distinguish between isodisomy and heterodisomy.

Twenty-two of the 30 cytogenetically normal study subjects inherited two copies of each of the chromosome 15 loci. For example, we determined the number of copies of each DNA locus in three patients with maternal uniparental disomy and found that they had two copies of DNA probes 189-1 (Patient 26) or IR10-1 (Patients 24 and 25) (Fig. 1B). Eighteen of these patients with an intact 15q11q13 region were subsequently found to have maternal uniparental disomy on RFLP analysis\* (Fig. 2).

Uniparental disomy in Prader-Willi syndrome was also detected in a pair of monozygotic twins (Patients 7A and 7B). Probe 189-1 detected two copies of the maternally specific 3.8-kilobase (kb) band in *TaqI*-digested DNA, but no paternal 2-kb band (Fig. 1C, upper autoradiograph). This pattern is that of maternal disomy, but the probe used did not determine whether or not the chromosomes in the monozygotic twins were identical. Isodisomy was identified with probe IR10-1: the twins each inherited two copies of one allele (12.5 kb) from their heterozygous mother (Fig. 1C, lane 4), since their father (lane 3) was homozygous for a third, distinguishable allele of 17.5 kb

(Fig. 1C, lower autoradiograph). Analyses of DNA from Patients 9 and 29 showed that both had maternal disomy at the IR10-1 locus (Fig. 1D). However, analysis with probes 189-1 and 34 of DNA from Patients 9 and 29, respectively, showed that two different alleles were inherited but did not identify the parental origin of the alleles (Fig. 1D). Uniparental disomy at IR10-1 flanked by closely linked markers that are heterozygous suggests the likelihood of maternal heterodisomy for much or all of 15q11q13, provided that recombination between these markers has not occurred.

Probes localized to the 15q11q13 region identified 12 of the 18 cases (67 percent) of uniparental disomy. Fourteen patients were heterozygous at several loci, but the probes did not identify the parental origin of the two alleles (Fig. 2). At each of these loci, the informative allele was consistently of maternal origin (no paternally informative alleles were detected), suggesting that maternal uniparental disomy might be demonstrated in a significant proportion of these patients with the use of more informative DNA probes. MS620 (defining locus D15S86), a highly informative probe near the telomere of chromosome 15, identified uniparental disomy in DNA from 11 of the 17 patients tested (65 percent), including 5 of the 6 patients in whom it was not detectable with 15q11q13 DNA markers (Fig. 2). For example, heterodisomy was found at the MS620 locus in Patients 12, 14, 18, and 25, whereas isodisomy was found in Patients 17 and 26 (Fig. 3). The remaining case of maternal uniparental disomy (in Patient 13), which was not detected with 15q11q13 or MS620 probes, was identified with probe MS1-14 (defining locus D15S1) (Fig. 2).

#### Biparental Inheritance in Prader-Willi Syndrome

Four patients (13 percent) without cytogenetic deletions had biparental inheritance of chromosome 15q11q13.\* For example, Patient 27 inherited one paternal (2.3 kb) and one maternal (approximately 1.2 kb) allele with the MS620 probe (Fig. 3). Three patients with biparental inheritance (Patients 15, 27, and 28) did not have the classic features of Prader-Willi syndrome. One patient (Patient 27) had a bulbous, upturned nose, sparse hair, and large hands and feet and did not have compulsive eating behavior. She apparently does not have Prader-Willi syndrome, although a revised diagnosis has not yet been made. The fourth patient with biparental inheritance (Patient 19) had a typical clinical appearance that could not be distinguished from that of patients with Prader-Willi syndrome who have a deletion or uniparental disomy, all of whom have classic phenotypic features.

#### Effect of Maternal Age in Prader-Willi Syndrome

Both the mothers and the fathers of the patients with uniparental disomy were significantly older than the parents of the patients with cytogenetic or molecu-

\*See NAPS document no. 04942 for three pages of supplementary material. Order from NAPS c/o microfiche Publications, P.O. Box 3513, Grand Central Station, New York, NY 10163-3513. Remit in advance (in U.S. funds only) \$7.75 for photocopies or \$4 for microfiche. Outside the U.S. and Canada add postage of \$4.50 (\$1.50 for microfiche postage). There is a \$15 invoicing charge on all orders filled before payment.



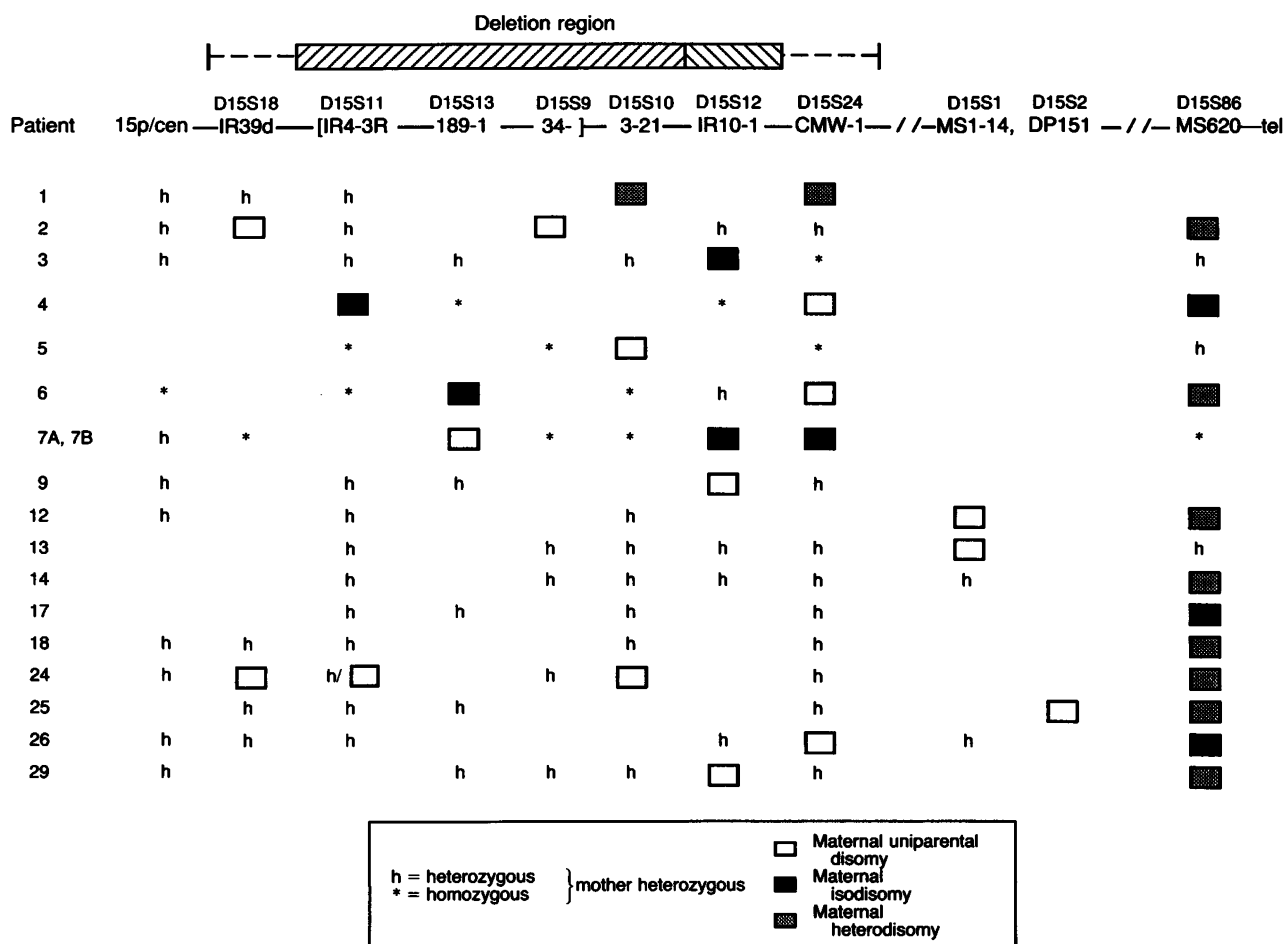


Figure 2. Patterns of Uniparental Disomy in 18 Patients with Prader-Willi Syndrome.

The order of seven DNA probes within chromosome 15q11q13 and three DNA probes distal to this region is shown from the centromere (cen) to the telomere (tel)<sup>14,18,20,39</sup> (and unpublished data). Brackets indicate that the order of probes is unknown. The loci defined are listed above the probes. Four alternative molecular classes of deletions in Prader-Willi syndrome, as discussed in the text, are shown (deletion region). DNA probes MS1-14 and DP151 map to 15q14-q22, whereas MS620 maps close to the telomere. Cytogenetic heteromorphisms (15p/cen) are noted.

Patient 1 was not studied with probe MS620, and locus IR39d was not evaluated in Patients 3, 4, 5, 6, and 29. In addition, not all families were evaluated with probes MS1-14 and DP151. Patient 24 demonstrated maternal uniparental disomy after digestion of DNA with *KpnI* and was found to be heterozygous with the use of *StyI*<sup>43</sup> at the IR4-3R locus, and Patient 3 was found to be heterozygous with the use of *PvuII* at the IR4-3R locus (unpublished data).

lar deletions ( $P = 0.018$  for mothers and  $P = 0.0085$  for fathers) (Table 1). Because of the evidence of maternal nondisjunction, it is presumed that the paternal ages simply reflect the mothers' ages.

### DISCUSSION

Uniparental disomy was suggested by Engel as a likely mechanism of disease, given the high rate of germ-cell aneuploidy in humans.<sup>42</sup> However, this type of inheritance in which both chromosomes of a particular pair come from the same parent seemed to violate traditional genetic theory. The first conclusive evidence of its occurrence in humans<sup>44</sup> was obtained after the development of molecular techniques, although at the time it was thought "unlikely that uniparental disomy will turn out to be anything but an

interesting rarity."<sup>45</sup> In the present study, we found that the selection of cytogenetically normal patients with Prader-Willi syndrome greatly increases the frequency of detection of uniparental disomy. Of 29 patients with Prader-Willi syndrome who did not have a cytogenetic deletion, 17 (59 percent) had maternal uniparental disomy for chromosome 15 (Fig. 2) (the monozygotic twins were counted as 1). Since two thirds of patients have a cytogenetic deletion of 15q11q13, we suggest that one fifth of all those with Prader-Willi syndrome have maternal uniparental disomy for chromosome 15 — a remarkably high frequency in a human disease. These conclusions are supported by the independent finding that 7 of 37 patients with Prader-Willi syndrome had uniparental disomy.<sup>46</sup> Uniparental disomy has now been found for

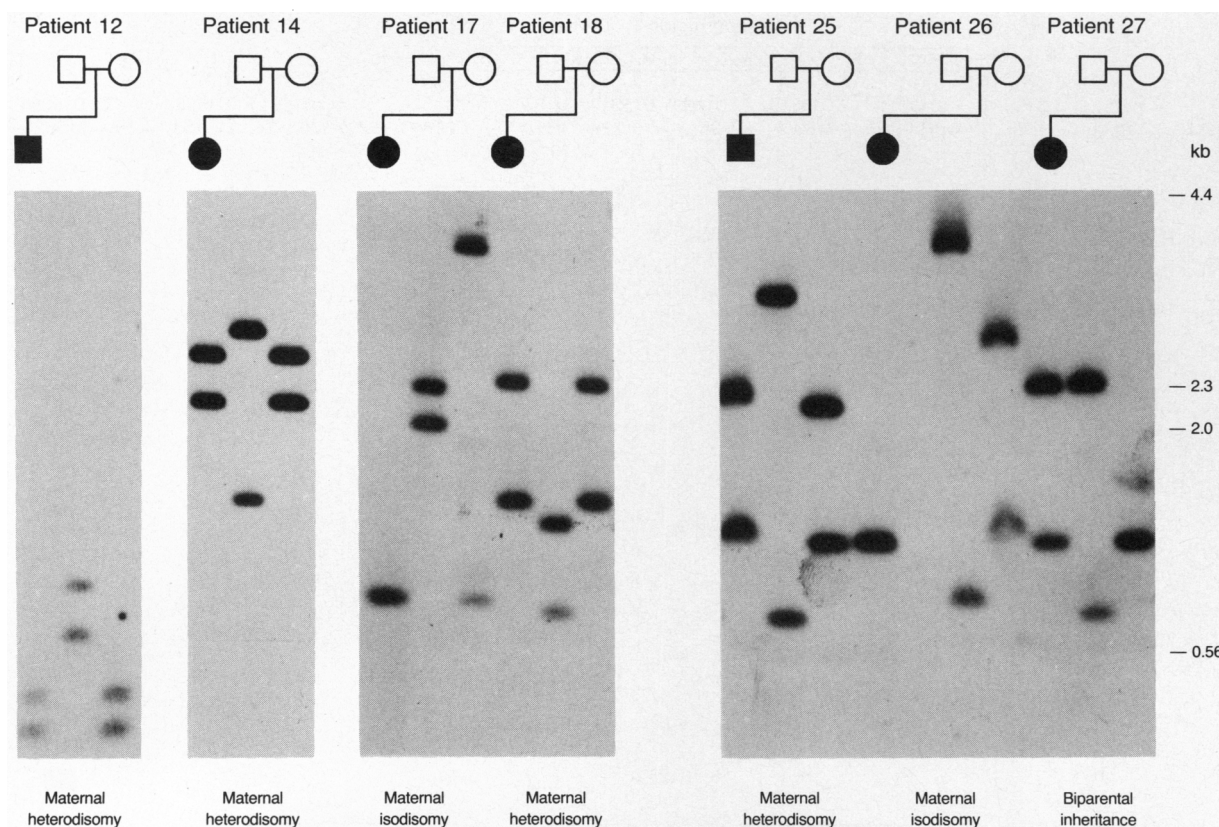


Figure 3. Detection of Maternal Uniparental Disomy in Prader-Willi Syndrome with a Highly Informative Chromosome 15 DNA Probe. Autoradiographs are shown for probe MS620, on *A**l**u**I*-digested DNA from representative families with a proband with Prader-Willi syndrome. The sizes of DNA standards are listed on the right.

10 human chromosomes (unpublished data), suggesting that it may be more common than previously proposed.

Our data on cytogenetic and DNA markers spanning the length of chromosome 15 in 18 patients with Prader-Willi syndrome show that the entire chromosome is involved in uniparental disomy. Additional markers throughout 15q with a high degree of polymorphism<sup>47</sup> will substantially aid in the detection of uniparental disomy and help identify the type (iso or hetero) of disomy present (unpublished data). The different types of disomy reflect two events occurring during meiosis: nondisjunction and recombination. In each case, the disomic state near the centromere identifies the stage of meiosis at which nondisjunction occurred. Heterodisomy in the region of the centromere indicates the occurrence of a nondisjunctional error during the first meiotic division, whereas isodisomy close to the centromere identifies either an error occurring during the second meiotic division or a postzygotic event.<sup>44</sup> Accordingly, at least 60 percent of the 17 independent events analyzed in our study occurred during the first meiotic division, and this value might be closer to 82 to 94 percent, if markers proximal to loci IR4-3R and IR39d could be scored in the six patients in whom these analyses were uninformative (Fig. 2). These findings are similar to those in trisomy

21, in which the extra chromosome results from a maternal error during the first meiotic division in the majority of cases.<sup>48</sup> In addition, the regional patterns of heterodisomy and isodisomy that we detected (Fig. 2) are explained by the occurrence of recombination before nondisjunction. The localization of these recombination events allows polymorphic genes or markers to be mapped with respect to these sites (unpublished data).

The evidence that maternal nondisjunction represents the first step in the process of maternal uniparental disomy in Prader-Willi syndrome is supported by a maternal-age effect (Table 1), which has been corroborated independently in a smaller group of patients.<sup>46</sup> An increased frequency of nondisjunctional events has previously been associated with advanced maternal age in Down's syndrome and other aneuploid conditions.<sup>49-52</sup> The chromosome 15 system that we describe is a simpler model to analyze, since no additional chromosome is present from the second parent. Furthermore, paternal uniparental disomy for chromosome 15 has been observed in three patients with Angelman syndrome, occurring in about 2 to 4 percent of affected patients<sup>21,22</sup> in contrast to its high frequency (20 percent) in Prader-Willi syndrome. This suggests that paternal nondisjunction for chromosome 15 is not as common as maternal nondis-

Table 1. Ages of the Parents at Conception of Their Children with Prader-Willi Syndrome.\*

MOLECULAR FINDING	NO. OF FAMILIES	MATERNAL AGE	PATERNAL AGE
		yr	
Deletion†	11	24.2±4.1	26.1±3.5
Uniparental disomy‡	17	30.5±7.7	32.9±7.3
Biparental inheritance§	3	27.7±2.5	29.7±0.6

\*Plus-minus values are means ±SD. There was a significant difference in parental ages between the deletion and uniparental disomy groups ( $P = 0.018$  for mothers and  $P = 0.0085$  for fathers, by the t-test). The biparental group was not included because of the small sample. However, an F test of all three groups yielded P values of 0.049 for the mothers and 0.02 for the fathers.

†The families of eight patients and three controls were studied.

‡The parents of the monozygotic twins (Patients 7A and 7B) were counted only once.

§The ages of the parents of Patient 28 were not available.

junction. Alternatively, a fetus with paternal uniparental disomy for chromosome 15 may be less viable in utero.

A number of possible meiotic or postzygotic mechanisms for uniparental disomy have been proposed,<sup>42,44</sup> including gamete complementation by the union of a nullisomic and disomic gamete and a trisomic conception followed by random chromosome loss. These two mechanisms are most likely to occur in maternal uniparental disomy for the following three reasons. First, it is possible in most cases of maternal uniparental disomy to rule out postzygotic events, since most events result from nondisjunction occurring during the first meiotic division, a process that requires the transmission of two different maternal chromosomes to the zygote. Second, the association of uniparental disomy with advanced maternal age is consistent with maternal nondisjunction. Third, there is a high frequency of trisomy for chromosome 15.<sup>49</sup> Since trisomy 15 is lethal to the embryo, the loss of one chromosome 15 by mitotic nondisjunction could "rescue" a nonviable embryo. The random loss of a maternal chromosome in trisomy 15 would allow normal development, whereas the loss of the paternal chromosome would lead to Prader-Willi syndrome. The latter should occur in one third of the cases of uniparental disomy, and its occurrence has recently been supported by clinical and molecular data on a single patient.<sup>53</sup>

The role of genomic imprinting<sup>20,23-25</sup> in Prader-Willi and Angelman syndromes has recently been reviewed.<sup>28,54,55</sup> Since we have shown that uniparental disomy spans chromosome 15 and that patients with uniparental disomy do not differ clinically from patients with the 15q11q13 deletion (except for the occurrence of hypopigmentation, as discussed below), we conclude that no other gene on chromosome 15 whose phenotypic expression can be detected at this time is affected by genomic imprinting. Because of the influence of genomic imprinting in Prader-Willi and Angelman syndromes, the expression of one parental chromosome or the other in these disorders provides a

biologic assay to identify candidate genes. To date, only one imprinted gene (locus detected by the complementary DNA DN34) has been identified in chromosome 15q11q13, although its function and role in either syndrome are as yet unknown.<sup>54-56</sup>

All the patients with deletions or uniparental disomy in the present study had classic phenotypic features of Prader-Willi syndrome. Those with uniparental disomy did not have hypopigmentation, as was commonly seen in those with a deletion (unpublished data). Therefore, hypopigmentation may result from a gene-dosage effect, and the gene does not appear to be imprinted. Hypopigmentation in Prader-Willi<sup>17,30</sup> and Angelman<sup>57</sup> syndromes has previously been associated with cytogenetic deletions, and more recently, a candidate gene and a mouse model of hypopigmentation have been identified.<sup>58</sup> It was interesting that three of the four patients with biparental inheritance had some atypical features that were not consistent with Prader-Willi syndrome. Each of these patients had been given a diagnosis at a different genetics center and thus might benefit from careful study in a single clinical setting. In contrast, there is a large group (20 percent) of patients with classic Angelman syndrome who do not have a detectable deletion or uniparental disomy<sup>59</sup> (and Zori R, Nicholls RD: unpublished data). These patients with Prader-Willi and Angelman syndromes may have a small molecular abnormality involving loci for which DNA probes are not yet available. A mutation in an unlinked gene, a mutation in the imprinting mechanism, and an incorrect diagnosis — as was the case in Patient 27 — are other possible explanations.

Our study indicates that in approximately 95 percent of all patients with Prader-Willi syndrome, at least those with the classic phenotype, the disease can be diagnosed with molecular techniques. This conclusion is based on our findings that maternal uniparental disomy occurs in 60 percent of patients who do not have a cytogenetic deletion, that molecular deletions occur in 29 percent, and that there is no detectable molecular abnormality in 11 percent (with the exclusion of the patient whose disease was incorrectly diagnosed). In addition, in all patients with cytogenetic deletions (approximately 66 percent of all those with Prader-Willi syndrome), whom we excluded from our study, the deletion can be detected by molecular techniques.<sup>10,13,18,39,41,46</sup> Additional DNA markers are needed for a more refined diagnosis of Prader-Willi syndrome. More recently, we have demonstrated that polymerase-chain-reaction analysis of DNA markers throughout chromosome 15q that have a high degree of polymorphism can detect a substantial number of cases of uniparental disomy (unpublished data). Similar types of DNA markers<sup>47</sup> within 15q11q13 are clearly needed for studies of the parental origin of Prader-Willi and Angelman syndromes. The accuracy of molecular diagnosis can also be increased by the use of probe DN34 in a DNA methylation test at the putative imprinted locus from chromosome 15q11q13,

a technique that to date has specifically identified all patients with Prader-Willi and Angelman syndromes who have a deletion or uniparental disomy.<sup>56</sup> Technically, prenatal screening could be offered to older women, who as we have shown are at increased risk of delivering a child with maternal uniparental disomy for chromosome 15. However, it remains to be demonstrated whether screening is feasible at an acceptable cost. In conclusion, our studies have demonstrated the feasibility of molecular techniques in the diagnosis of Prader-Willi syndrome. Molecular diagnosis should therefore be included in the comprehensive assessment of a child suspected of having Prader-Willi syndrome.

We are indebted to all the patients with Prader-Willi syndrome and their families for their continued interest in and support of this research; to Brenda Finucane, Janet McIlvaine, Michele Muracca Clemens, Richard MacIntire, Dr. Jeanne Hanchett, and all the family physicians and pediatricians for assistance in the collection of blood specimens; to Dr. Philip Mowrey, Lee Seibert-Gannutz, and Michael McCurdy for cytogenetic assistance; to Dr. Charles Williams for clinical review of patient records and photographs; to Dr. Jeffrey Longmate for statistical assistance; to Dr. Wendy Robinson for exchanges of unpublished material; to Dr. Paul Neumann for helpful discussion; and to Drs. Ronald Poland, Elliot Vesell, William Luttge, Peter Stacpoole, and Charles Williams for critical review of the manuscript.

## REFERENCES

- Cassidy SB. Prader-Willi syndrome. *Curr Probl Pediatr* 1984;14:1-55.
- Butler MG. Prader-Willi syndrome: current understanding of cause and diagnosis. *Am J Med Genet* 1990;35:319-32.
- Greenberg F, Elder FFB, Ledbetter DH. Neonatal diagnosis of Prader-Willi syndrome and its implications. *Am J Med Genet* 1987;28:845-56.
- Aughton DJ, Cassidy SB. Physical features of Prader-Willi syndrome in neonates. *Am J Dis Child* 1990;144:1251-4.
- Hawkey CJ, Smithies A. The Prader-Willi syndrome with a 15/15 translocation: case report and review of the literature. *J Med Genet* 1976;13:152-7.
- Ledbetter DH, Riccardi VM, Airhart SD, Strobel RJ, Keenan BS, Crawford JD. Deletions of chromosome 15 as a cause of the Prader-Willi syndrome. *N Engl J Med* 1981;304:325-9.
- Ledbetter DH, Greenberg F, Holm VA, Cassidy SB. Conference report: Second Annual Prader-Willi Syndrome Scientific Conference. *Am J Med Genet* 1987;28:779-90.
- Angelman H. "Puppet" children: a report on three cases. *Dev Med Child Neurol* 1965;7:681-8.
- Kaplan LC, Wharton R, Elias E, Mandell F, Donlon T, Latt SA. Clinical heterogeneity associated with deletions in the long arm of chromosome 15: report of 3 new cases and their possible genetic significance. *Am J Med Genet* 1987;28:45-53.
- Knoll JHM, Nicholls RD, Magenis RE, Graham JM Jr, Lalande M, Latt SA. Angelman and Prader-Willi syndromes share a common chromosome 15 deletion but differ in parental origin of the deletion. *Am J Med Genet* 1989;32:285-90.
- Magenis RE, Toth-Fejel S, Allen LJ, et al. Comparison of the 15q deletions in Prader-Willi and Angelman syndromes: specific regions, extent of deletions, parental origin, and clinical consequences. *Am J Med Genet* 1990;35:333-49.
- Williams CA, Gray BA, Hendrickson JE, Stone JW, Cantú ES. Incidence of 15q deletions in the Angelman syndrome: a survey of twelve affected persons. *Am J Med Genet* 1989;32:339-45.
- Donlon TA. Similar molecular deletions on chromosome 15q11.2 are encountered in both the Prader-Willi and Angelman syndromes. *Hum Genet* 1988;80:322-8.
- Knoll JHM, Nicholls RD, Magenis RE, et al. Angelman syndrome: three molecular classes identified with chromosome 15q11q13-specific DNA markers. *Am J Hum Genet* 1990;47:149-55.
- Zackowski JL, Nicholls RD, Gray BA, et al. Cytogenetic and molecular analysis in Angelman syndrome. *Am J Med Genet* (in press).
- Butler MG, Palmer CG. Parental origin of chromosome 15 deletion in Prader-Willi syndrome. *Lancet* 1983;1:1285-6.
- Butler MG, Meaney FJ, Palmer CG. Clinical and cytogenetic survey of 39 individuals with Prader-Labhart-Willi syndrome. *Am J Med Genet* 1986;23:793-809.
- Nicholls RD, Knoll JH, Glatt K, et al. Restriction fragment length polymorphisms within proximal 15q and their use in molecular cytogenetics and the Prader-Willi syndrome. *Am J Med Genet* 1989;33:66-77.
- Williams CA, Zori RT, Stone JW, Gray BA, Cantú ES, Ostrer H. Maternal origin of 15q11-13 deletions in Angelman syndrome suggests a role for genomic imprinting. *Am J Med Genet* 1990;35:350-3.
- Nicholls RD, Knoll JHM, Butler MG, Karam S, Lalande M. Genetic imprinting suggested by maternal heterodisomy in non-deletion Prader-Willi syndrome. *Nature* 1989;342:281-5.
- Malcolm S, Clayton-Smith J, Nichols M, et al. Uniparental paternal disomy in Angelman's syndrome. *Lancet* 1991;337:694-7.
- Nicholls RD, Pai GS, Gottlieb W, Cantú ES. Paternal uniparental disomy of chromosome 15 in a child with Angelman syndrome. *Ann Neurol* (in press).
- Solter D. Differential imprinting and expression of maternal and paternal genomes. *Annu Rev Genet* 1988;22:127-46.
- Hall JG. Genomic imprinting: review and relevance to human diseases. *Am J Hum Genet* 1990;46:857-73.
- Sapienza C. Parental imprinting of genes. *Sci Am* 1990;263(4):52-60.
- Smeets DFCM, Hamel BCJ, Nelen MR, et al. Prader-Willi syndrome and Angelman syndrome in cousins from a family with a translocation between chromosomes 6 and 15. *N Engl J Med* 1992;326:807-11.
- Saitoh S, Kubota T, Ohta T, et al. Familial Angelman syndrome caused by imprinted submicroscopic deletion encompassing GABA<sub>A</sub> receptor  $\beta_3$ -subunit gene. *Lancet* 1992;339:366-7.
- Hall JG. Genomic imprinting and its clinical implications. *N Engl J Med* 1992;326:827-9.
- Holm VA. The diagnosis of Prader-Willi syndrome. In: Holm VA, Sulzbacher S, Pipes PL, eds. *The Prader-Willi syndrome*. Baltimore: University Park Press, 1981:27-44.
- Butler MG. Hypopigmentation: a common feature of Prader-Labhart-Willi syndrome. *Am J Hum Genet* 1989;45:140-6.
- Yu RL, Aronson MM, Nichols WW. High-resolution bands in human fibroblast chromosomes induced by actinomycin D. *Cytogenet Cell Genet* 1981;31:111-4.
- Seabright M. A rapid banding technique for human chromosomes. *Lancet* 1971;2:971-2.
- Aldridge J, Kunkel L, Bruns G, et al. A strategy to reveal high-frequency RFLPs along the human X chromosome. *Am J Hum Genet* 1984;36:546-64.
- Donlon TA, Lalande M, Wyman A, Bruns G, Latt SA. Isolation of molecular probes associated with the chromosome 15 instability in the Prader-Willi syndrome. *Proc Natl Acad Sci U S A* 1986;83:4408-12. [Erratum, *Proc Natl Acad Sci U S A* 1986;83:6964.]
- Rich DC, Witkowski CM, Summers KM, van Tuinen P, Ledbetter DH. Highly polymorphic locus D15S25 (CMW-1) maps to 15pter-q13. *Nucleic Acids Res* 1988;16:8740.
- Barker D, Schafer M, White R. Restriction sites containing CpG show a higher frequency of polymorphism in human DNA. *Cell* 1984;36:131-8.
- Brissenden JE, Page DC, de Martinville B, Trowsdale J, Botstein D, Francke U. Regional assignments of three polymorphic DNA segments on human chromosome 15. *Genet Epidemiol* 1986;3:231-9.
- Armour JAL, Povey S, Jeremiah S, Jeffreys AJ. Systematic cloning of human minisatellites from ordered array charomid libraries. *Genomics* 1990;8:501-12.
- Tantravahi U, Nicholls RD, Stroh H, et al. Quantitative calibration and use of DNA probes for investigating chromosome abnormalities in the Prader-Willi syndrome. *Am J Med Genet* 1989;33:78-87.
- Higgs DR, Wainscoat JS, Flint J, et al. Analysis of the human  $\alpha$ -globin gene cluster reveals a highly informative genetic locus. *Proc Natl Acad Sci U S A* 1986;83:5165-9.
- Wagner Mascari MJ. Molecular diagnosis of Prader-Willi syndrome. (Ph.D. dissertation, University Park: Pennsylvania State University, 1991.)
- Engel E. A new genetic concept: uniparental disomy and its potential effect, isodisomy. *Am J Med Genet* 1980;6:137-43.
- Hamabe J, Niikawa N. Styl polymorphism at the D15S11 locus. *Nucleic Acids Res* 1990;18:5579.
- Spence JE, Perciaccante RG, Greig GM, et al. Uniparental disomy as a mechanism for human genetic disease. *Am J Hum Genet* 1988;42:217-26.
- Warburton D. Uniparental disomy: a rare consequence of the high rate of aneuploidy in human gametes. *Am J Hum Genet* 1988;42:215-6.
- Robinson WP, Bottani A, Yagang X, et al. Molecular, cytogenetic, and clinical investigations of Prader-Willi syndrome patients. *Am J Hum Genet* 1991;49:1219-34.
- Weber JL, May PE. Abundant class of human DNA polymorphisms which can be typed using the polymerase chain reaction. *Am J Hum Genet* 1989;44:388-96.

48. Antonarakis SE, Down Syndrome Collaborative Group. Parental origin of the extra chromosome in trisomy 21 as indicated by analysis of DNA polymorphisms. *N Engl J Med* 1991;324:872-6.
49. Hassold TJ, Jacobs PA. Trisomy in man. *Annu Rev Genet* 1984;18:69-97.
50. Hassold T, Chiu D. Maternal age-specific rates of numerical chromosome abnormalities with special reference to trisomy. *Hum Genet* 1985;70:11-7.
51. Kupke KG, Muller U. Parental origin of the extra chromosome in trisomy 18. *Am J Hum Genet* 1989;45:599-605.
52. May KM, Jacobs PA, Lee M, et al. The parental origin of the extra X chromosome in 47, XXX females. *Am J Hum Genet* 1990;46:754-61.
53. Cassidy SB, Lai L-W, Erickson RP, et al. Trisomy 15 with loss of the paternal 15 as a cause of Prader-Willi syndrome due to maternal disomy. *Am J Hum Genet* (in press).
54. Nicholls RD. Genomic imprinting and uniparental disomy in Angelman and Prader-Willi syndromes: a review. *Am J Med Genet* (in press).
55. Nicholls RD, Rinchik EM, Driscoll DJ. Genomic imprinting in mammalian development: Prader-Willi and Angelman syndromes as disease models. In: Surani MA, ed. *Seminars in developmental biology* (in press).
56. Driscoll DJ, Waters MF, Williams CA, et al. A DNA methylation imprint, determined by the sex-of-parent, distinguishes the Angelman and Prader-Willi syndromes. *Genomics* (in press).
57. Fryburg JS, Breg WR, Lindgren V. Diagnosis of Angelman syndrome in infants. *Am J Med Genet* 1991;38:58-64.
58. Nicholls RD, Neumann PE, Horsthemke B, Rinchik G. Mapping of loci deleted in Angelman and Prader-Willi syndromes identifies conservation of synteny in mice and possible animal models. *Am J Hum Genet* 1991;49: Suppl:334. abstract.
59. Knoll JHM, Glatt KA, Nicholls RD, Malcolm S, Lalande M. Chromosome 15 uniparental disomy is not frequent in Angelman syndrome. *Am J Hum Genet* 1991;48:16-21.

---

#### IMAGES IN CLINICAL MEDICINE

Images in Clinical Medicine, a new *Journal* feature, presents a variety of clinically important visual images, emphasizing those a doctor might encounter in an average day at the office, the emergency ward, or the hospital. If you have an original unpublished, high-quality color or black-and-white photograph of a typical image that you would like considered for publication, send it with a brief descriptive legend to Kim Eagle, M.D., Massachusetts General Hospital, Cardiac Unit, ACC 4, 15 Parkman St., Boston, MA 02114. Two 5-by-7-inch prints should be sent. If you submit a slide, please send a 5-by-7-inch print along with it. No more than two persons will receive credit for submitting an image.