

Contribution of the juxta-transmembrane intracellular regions to the time-course and permeation of ATP-gated P2X7 receptor ion channels.

Rebecca C. Allsopp and Richard J. Evans

Department of Cell Physiology & Pharmacology, University of Leicester, Leicester LE1 9HN, United Kingdom.

Running title: Juxta-transmembrane regions regulate P2X7 receptor gating

*To whom correspondence should be addressed. Tel.:44-116-227-7057; Fax:44-116-252-5045; E-mail:rje6@le.ac.uk.

Keywords: Ligand gated ion channel, mutagenesis, ATP, P2X receptor, pore dilation.

Background: P2X7 receptor channels show facilitation to repeated applications of ATP and pore dilation.

Results: Mutations in either the intracellular amino or carboxyl termini changed the time-course and reduced pore dilation, however when combined they restored wild type properties.

Conclusion: Interactions between the intracellular termini regulate properties.

Significance: The study provides insight into the regulation of channel facilitation and pore dilation.

ABSTRACT

P2X7 receptors are ATP gated ion channels that contribute to inflammation and cell death. They have the novel property of showing marked facilitation to repeated applications of agonist and the intrinsic channel pore dilates to allow passage of fluorescent dyes. A 60s application of ATP to hP2X7 receptors expressed in *Xenopus* oocytes gave rise to a current that had a biphasic time course with initial and secondary slowly developing components. A second application of ATP evoked a response with a more rapid time to peak. This facilitation was reversed to initial levels following a 10 minute agonist free interval. A chimeric approach showed replacement of the pre-TM1 amino terminal region with the corresponding P2X2 receptor section (P2X7-2N β) gave responses that quickly reached steady state and did not show facilitation. Subsequent point mutations of variant residues identified N16 and S23 as important contributors to the time-course/facilitation.

The P2X7 receptor is unique in having an intracellular carboxyl terminal cysteine rich region (Ccys). Deletion of this region removed the secondary slowly developing current and when expressed in HEK293 cells ethidium bromide uptake was only ~5% of WT levels indicating reduced large pore formation. Dye uptake was also reduced for the P2X7-2N β chimera. Surprisingly, combination of the chimera and the Ccys deletion (P2X7-2N β delCcys) restored current rise time and ethidium uptake to WT levels. These findings suggest there is a co-evolved interaction between the juxta-transmembrane amino and carboxyl termini in regulation of P2X7 receptor gating.

The widespread role of ATP as an extracellular signalling molecule activating excitatory P2X receptor ion channels has become apparent in the more than 20 years since the initial cloning of the receptors (1). The seven P2X receptor subunits (P2X1-7) have intracellular amino and carboxyl termini, two transmembrane (TM) segments and a large extracellular ligand binding loop (2-4). The subunits assemble to form a variety of homo- and hetero-trimeric receptors with a range of properties (1,5). One feature that can be used to distinguish receptor sub-types is the time-course of the response. This ranges from rapid desensitization during the continued presence of ATP for P2X1 and P2X3 receptors, through P2X2 receptor mediated responses that have a monophasic rise, are relatively sustained (for 10s agonist application), and readily reproducible, to P2X7 receptors where their initial slow onset kinetics

can speed dramatically with repeated stimulation and prolonged or repeated applications are required to reach a steady state response (a process referred to as facilitation or sensitization)(1,5). The transient activation of P2X1 receptors in platelets contributes to thrombosis (6). P2X2 receptor mutations that render the channel non-functional have been associated with hearing loss (7) and knockout mouse studies have revealed several neuronal roles (for review see (1)). P2X7 receptors are expressed on immune cells (8), have roles in inflammation/pain sensation (9), and responses show plasticity dependent on the duration of stimulation leading to changes in morphology, and ultimately cell death (10). Thus the temporal characteristics of the receptor are likely to play an important role in their signalling and thus their physiological and pathophysiological roles.

The differences in properties between P2X receptor splice variants has highlighted the contribution of the intracellular amino and carboxyl termini as well as the transmembrane segments to determining the time-course of ATP evoked currents e.g. (11-14). This has been supported with work on chimeras for example between P2X1 and P2X2 receptors (15). The amino terminus of P2X receptors is similar in length between receptor subtypes and contains a conserved protein kinase C (PKC) consensus sequence 10-12 residues before a conserved glycine residue at the start of the first transmembrane (TM1) segment. We have shown that for human P2X1 and P2X2 receptors that this pre-TM1 region between the consensus PKC site and the start of TM1 plays a dominant role in the regulation of time-course and may interact with intracellular carboxyl terminal residues (16).

The P2X7 receptor is distinct from the other P2X receptor subunits in that it has an intracellular carboxyl terminal cysteine rich (Ccys) region between the end of the second transmembrane segment and the conserved YXXXXK trafficking motif (17), as well as a C terminal tail that is >120 amino acids longer (18). The marked facilitation in the time-course and amplitude of agonist evoked responses of P2X7 receptors to repeated applications and dilation of the channel pore (18-20) can be modified by naturally occurring polymorphisms in the C terminal tail (e.g.(21)) and C terminal mutations modify pore dilation

(18), trafficking (22), and interaction with other proteins (23). However, the extent that other variant parts of the receptor contribute to the mechanism underlying the slow initial time course and facilitation is less clear (20). At rodent P2X7 receptors the P2X7k splice variant, with an alternative N terminus and TM1, shows differences in agonist sensitivity and pore formation (13). This suggests that the amino terminus, and potentially interactions of juxta-TM intracellular amino and carboxyl termini, regulate P2X7 receptor properties.

In this study we have determined the contribution of the pre-TM1 amino terminal domain and the unique hP2X7 receptor Ccys region to P2X receptor properties by making a series of chimeras (of pre-TM1 amino regions) and insertions/deletions of the Ccys region to human P2X1,2 and 7 receptors. We have shown that both the amino and Ccys region are involved in regulation of channel time-course and large pore formation. Interestingly mutation of both these regions returns the mutant P2X7 receptor back to wild type kinetics of activation and pore formation, suggesting that interaction between the intracellular juxta-membrane regions plays an important regulatory role.

EXPERIMENTAL PROCEDURES

Generation of Chimeric P2X Receptors and Point Mutations

The cDNAs for hP2X1 and hP2X2 receptors have been described previously (16) the hP2X7 receptor was a kind gift from Dr Lin-Hua Jiang, University of Leeds, U.K.. Chimeras were generated by mega-primer-mediated domain swapping as reported previously (16). In addition to chimeras, point mutants were made using the QuikChange mutagenesis kit (Stratagene). Production of the correct mutations and absence of coding errors was verified by DNA sequencing Automated ABI Sequencing Service, University of Leicester.

Expression in *Xenopus laevis* Oocytes and Electrophysiological Recordings

Wild type and mutant constructs were transcribed to produce sense-strand cRNA (mMessage mMachine, Ambion, Austin, TX) as described previously (24). Manually defolliculated stage V *Xenopus laevis* oocytes

were injected with 50 nl (50 ng) of cRNA using an Inject+Matic microinjector (J. A. Gaby, InjectMatic, Geneva, Switzerland) and stored at 16°C in ND96 buffer (in mM; 96 NaCl, 2 KCl, 1.8 CaCl₂, 1 MgCl₂, 5 sodium pyruvate, 5 HEPES, pH 7.6 supplemented with 50 µg/ml gentamycin and 50 µg/ml tetracycline). For electrophysiological recordings (3-7 days post-injection) oocytes were bathed in divalent free ND96 (in mM; 96 NaCl, 2 KCl, 5 sodium pyruvate, 5 HEPES, 0.1 flufenamic acid, pH 7.6). Two-electrode voltage clamp recordings were carried out as previously described (16) in response to U-tube application of ATP (Sigma). The U-tube application system (25) is positioned so that when activated the test drug solution flows into/against the flow of the bathing solution. In this way an interface is formed between the drug solution and the bathing solution. The U-tube was positioned so that the drug/bathing solution interface results in only a small proportion of the oocyte surface being exposed to drug and allows for rapid solution exchange (the drug solution and resulting interface can be visualised by the inclusion of fast green dye to the solution – this has no effect on ATP evoked responses). By restricting the region of the oocyte exposed to the drug solution exchange is more rapid than could be easily achieved for the whole oocyte. It is difficult to measure directly the time course of solution exchange for the U tube application system. However with the U-tube system the (10-50%) rise time of P2X1 receptor currents was 45 ± 9 ms, (n=10). This is not statistically different (p=0.13) from that which we recorded with our fast oocyte solution system used for voltage clamp fluorometry recordings (26), that also restricts the area of the oocyte to which test drug solutions are added, where the 10-50% rise time of hP2X1 currents was 29 ± 3 ms (n=39). In the case of the voltage clamp fluorometry perfusion system we are able to measure the rate of solution exchange around the oocyte with the dye fast green; this had a 10-50% rise time of 8 ± 2 ms, (n=8) ~ 3-4 fold faster than the P2X1 receptor current rise time. This suggests that the rate of solution exchange is not the major rate limiting factor in determining the rise time of the ATP evoked P2X1 receptor currents. As we saw no difference in the rise time for ATP currents using the U-tube or the time-course validated voltage clamp fluorometry perfusion system it

seems unlikely that the U-tube application system introduces appreciable errors into the estimate of the time-course of the responses. Therefore, the U-tube method is appropriate and has the resolution to allow chimeras/mutations that change the time-course of P2X7 receptor currents to be identified.

Cell Culture

HEK293-TSA 201 cells were maintained in DMEM supplemented with 10% fetal bovine serum, and 1% nonessential amino acids (Invitrogen) at 37 °C in a humidified atmosphere of 5% CO₂ and 95% air. A monolayer of cells at 80–90% confluence in a 6-well culture dish was transiently transfected using 4 µg of DNA (3.5 µg DNA of targeted receptor and 0.5 µg DNA of GFP) and 10 µl of Lipofectamine 2000 (Invitrogen) in 500 µl of serum-free Opti-MEM1. After 48 h of incubation cells were plated onto black walled, poly-D-lysine-coated 96 well plates (BD Biosciences) at 100% confluence. Cells were given a minimum 3 hours to adhere to the plate prior to the assay.

Dye uptake

Culture medium was removed and the cells were washed twice with either reduced divalent normal extracellular solution (RD NES in mM; 149 NaCl, 0.8 KCl, 0.6 CaCl₂, 0.08 MgCl₂, 10 D-glucose, 10 HEPES, pH 7.3) or sucrose dye uptake buffer (in mM; 280 sucrose, 5.6 KCl, 0.5 CaCl₂, 10 glucose, 10 HEPES, and 5 N-methyl-D-glucamine, pH 7.4). Cells were then incubated for 30 minutes in 100 µl of corresponding buffer containing 20 µM EtBr. EtBr uptake after agonist addition 300 µM 2',3'-O-(4-benzoylbenzoyl)-ATP, (Bz-ATP, Sigma) was monitored using a fluorometric imaging plate reader FlexStation with an excitation wavelength of 525 nm and an emission wavelength of 610 nm (cut off set at 595 nm). Transfection efficiency was assessed by measuring the co-transfected GFP levels using excitation wavelength 395 nm and emission wavelength 509 nm.

Biotinylation of Surface Receptors

Expression levels of wild type and mutant receptors were estimated by Western blot analysis of total cellular protein and cell surface proteins expressed in both oocytes and transiently transfected HEK293-TSA 201

cells. Injected oocytes/transiently transfected HEK293-TSA 201 cells were treated with 0.5 mg/ml EZ-link sulfo-NHS-LC-biotin (Thermo Fisher Scientific) in ND96 / PBS (respectively) for 30 min and washed three times with the corresponding buffer. Oocytes/cells were lysed in 300 μ l buffer H (100 mM NaCl, 20 mM Tris-Cl, pH 7.4, 1% Triton X-100, and 10 μ l/ml protease inhibitor mixture (P8340; Sigma)), and 80% of the spin-cleared supernatant (4 °C at 16,000 \times g for 10 min) was mixed with 30 μ l streptavidin-agarose beads (Sigma) and mixed on a rolling shaker overnight at 4 °C. The remaining 20% supernatant was retained to assess total protein expression for each sample. Beads were washed four times in buffer H, and an equal volume of 2 \times gel sample loading buffer was added to each and heated to 95 °C for 5 min prior to immunoblotting. Samples were run on a 10% SDS-PAGE gel, transferred to nitrocellulose, and screened for immunoreactivity for the HRP conjugated anti-FLAG antibody (1:5000) (Sigma), the anti-P2X1 receptor antibody (APR-001, 1:5000), anti-P2X2 receptor antibody (APR-003, 1:5000) or the anti-P2X7 receptor antibody (APR-004, 1:200) (all P2X receptor antibodies from Alomone, Israel). Protein bands were visualized using an ECL Plus kit and Hyperfilm MP (GE Healthcare). For chimeras and Cys mutants that showed a change in peak current amplitude there was no significant difference in surface expression from wild type hP2X receptor levels with the exception of P2X1-7N β where surface levels were reduced to $16 \pm 9\%$ of control P2X1 receptor levels.

Statistical Analysis

Data are presented as mean \pm S.E.M, and any differences between the means were determined by one-way analysis of variance followed by Bonferroni's test or Student's t test as appropriate. n refers to the number of oocytes or wells of cells tested.

RESULTS

hP2X7 receptor current facilitation is dependent on the interval between applications.

ATP evoked inward currents at the hP2X7 receptor. The initial response to ATP (1 mM EC₉₀ concentration) was characterized

by a slow rise and the current generally saturated towards the end of the 60s agonist application (Figure 1A). The inward current could usually be discriminated into an initial component (10-20s) then a brief slowing in rise time/inflection before a secondary rise in amplitude towards a steady state level. Following ATP washout the current returned to baseline levels. When there was a three minute interval between the applications subsequent responses to ATP had a faster rise time (measured as 10-50% rise time)(Figure 1A) and similar peak amplitude (Figure 2C). These results show that hP2X7 receptor currents show a change in time-course with faster responses to repeated applications as reported previously (20). This facilitation in time-course does not result from an influx of calcium as recordings were made in the absence of extracellular divalent ions. If an interval of 10 minutes was given between the second and third applications the time course of the current returned to the initial naïve rate (Figure 1B) showing that the facilitation process is reversible.

Contribution of the intracellular amino terminus to hP2X7 receptor channel gating.

We have previously shown, using a combination of chimeras and point mutants, that the amino terminus can play an important role in the regulation of the time-course of P2X1 and P2X2 receptor currents (16). ATP (100 μ M EC₉₀ concentration) application at the hP2X2 receptor evoked a rapidly rising current (10-50% rise time 71 ± 6 ms) that showed $\sim 10\%$ decay during the 60s agonist application ($87 \pm 3\%$ of peak current remaining at the end of the 60s pulse)(Figure 1C) equivalent to that reported previously (16). We were therefore interested to determine the effect of replacing the amino terminus of the facilitating hP2X7 receptor with that from the hP2X2 receptor (Figure 1C). At this chimera (P2X7-2N) ATP (100 μ M) evoked responses had similar time-course to the hP2X2 receptor with a rapid rise time (10-50% rise time 459 ± 158 ms) ~ 40 fold faster than the first response of WT P2X7 and ~ 12 fold faster than the facilitated P2X7 response. The time-course, amplitude and desensitization was the same to a second application of ATP 3 minutes later. These results indicate that the amino terminus contributes to control of P2X7 receptor gating and facilitation. We previously showed that

within the amino terminus it was the residues closest to the first transmembrane segment that made the most important contribution to regulation of time-course (16). We therefore tested whether swapping the variant region between the conserved consensus sequence for protein kinase C and the conserved glycine before TM1 alone (residues 14-26) could speed the response to ATP. Interestingly swapping of the N β region increased ATP sensitivity ~ 8 fold (pEC₅₀s of 3.7 ± 0.01 and 4.5 ± 0.01 for WT and P2X7-2N β respectively). To account for this change in sensitivity the time course of response for the chimera was determined for an EC₉₀ concentration of ATP (100 μ M, 10 fold lower than for the WT). This rise time at the P2X7-2N β chimera was essentially the same as that of the P2X7-2N chimera and similar to the P2X2 receptor. The peak current amplitude at the P2X7-2N β chimera was only a quarter of that of the P2X7 WT receptor. This did not result from a change in channel expression as the chimera was expressed at similar levels to the WT receptor at the cell surface (Figure 1E) and indicates the reduction in amplitude results from an effect on channel gating.

The rise of the current at the P2X7 receptor often showed an initial inflection (Figure 1). This raised the possibility that only the first component was recorded for the P2X7-2N β chimera or that a threshold current amplitude needed to be exceeded to trigger the secondary facilitating current. However this appears not to be the case as (i) when the traces were normalized to the amplitude at the inflection point the P2X7-2N β currents were still faster and (ii) when P2X7 currents (recorded after a shorter period of time after RNA injection to reduce channel expression) were of similar peak amplitude to P2X7-2N β they still showed the slow growth of current to the initial application (10-50% rise time of 21.2 ± 2.7 s and 19.8 ± 1.9 s for WT P2X7 receptor currents that were < 3 and > 6 μ A respectively). Taken together these results highlight that the residues before TM1 are important for controlling the unique gating features (low ATP sensitivity and time-course/current facilitation) of the P2X7 receptor.

Contribution of variant residues in the pre-TM1 region to P2X7 receptor properties.

The juxta-membrane amino terminal N β region contains 11 residues, of which 9 are variant between the P2X7 and P2X2 receptors (Figure 2A); a N-P variation within the consensus sequence for protein kinase C phosphorylation (TXK), and a further eight residues before the conserved glycine at the start of TM1. Mutations were made to determine the contribution of the variant residues. The P2X7-N16P mutant had no effect on the peak current amplitude, but resulted in an $\sim 50\%$ speeding in the time course of the initial response and subsequent responses were as fast as those of the P2X7-2N β receptor (Figure 2). Changing the 4 variant residues TRIQ to IVVR (19-22) had no effect on either the peak current amplitude or the time-course of the response (compared to P2X7 WT, Figure 2). In contrast swapping the 4 residues SMNY to NRRL (23-26) reduced peak current amplitude by $>95\%$ to 0.49 ± 0.17 μ A and ATP evoked responses had the fast, reproducible time-course of the P2X7-2N β chimera (Figure 2). To determine the contribution of the individual variant residues in this region we made single point mutants. The P2X7-M24R and N25R mutants were indistinguishable from the P2X7 WT (both amplitude and time-course, Figure 2). The P2X7-S23N mutant had considerably reduced peak current levels ($<5\%$ of P2X7, $p < 0.0001$) and the reproducible time-course of the P2X7-2N β chimera (Figure 2). The P2X7-Y26L mutant had reduced current amplitudes ($\sim 10\%$ of control, $p < 0.0001$) and a modest 2.7 fold speeding in the first response to ATP ($p < 0.0001$). However the rise time of the second application to ATP has the same time-course as the WT P2X7 receptor. These results suggest that the change in properties at the P2X7-2N β chimera were dominated by the S23N mutation close to TM1 with a contribution from the variation N16P.

Reciprocal amino terminal chimeras.

The chimeras and point mutations have identified 2 variant residues between P2X2 and P2X7 receptors in the pre-TM1 region that have an effect on time-course. The P2X1 receptor region shares the residues corresponding to P16 and N23. We therefore tested whether swapping the N β region of the

P2X7 receptor with that from the rapidly rising and desensitizing P2X1 receptor had any effect on time-course. The P2X7-1N β chimera showed an increase in rise time, and was faster than for P2X7-2N β (67 ± 9 and 118 ± 15 ms respectively 10-50%, $p < 0.01$). However in contrast to the P2X7-2N β there was a modest $\sim 15\%$ decay during the 60s agonist application (Figure 3). Like P2X7-2N β the P2X7-1N β chimera had reduced peak current amplitude (1198 ± 282 nA Figure 3) but no change in surface expression. These results support that the residues 16 and 23 make an important contribution to the time-course of responses.

As facilitation of the P2X7 receptor could be removed by swapping the pre-TM1 region with a section from either a desensitizing (P2X1) or non-desensitizing (P2X2) receptor it raised the possibility that the P2X7 pre-TM1 region imparts the facilitatory/slow rise time phenotype. To test if this was the case we generated reciprocal chimeras inserting the P2X7 pre-TM1 region into either P2X1 (P2X1-7N β) or P2X2 (P2X2-7N β) receptors (Figure 3). Neither of these reciprocal chimeras showed a slow rise time/facilitation; indeed swapping the pre-TM1 region for that from the P2X7 receptor actually increased desensitization at both P2X1 (decay to 50% peak current 45 ± 7 , 1348 ± 136 ms for P2X1-7N β and P2X1 respectively) and P2X2 receptors (P2X2-7N β decays to 50% of peak current in 1475 ± 327 ms with 7.5 ± 2.2 and $88 \pm 2.5\%$ remaining at the end of the 60s pulse for P2X2-7N β and P2X2 WT respectively). For the P2X1-7N β chimera the peak amplitude of the currents was also reduced by $>97\%$ and reduction in total charge flow through the open channel is even greater. As the P2X1 receptor enters the desensitized state through the agonist bound open state (27) this indicates a marked effect on channel gating. The reduction in current was associated with an $84 \pm 9\%$ decrease in surface expression of the receptor, indicating reduced trafficking contributes to the reduction in current amplitude. The results also show that the juxta-membrane amino terminal is important for regulation of channel gating and it is unlikely that the hP2X7 N β region alone is responsible for current facilitation.

Contribution of the hP2X7 receptor C terminal cysteine rich region to current facilitation.

The P2X7 receptor is unique in having a cysteine rich region (Ccys, residues 362-379) just after TM2 and an extended C terminal tail. Both removal of the cysteine rich region and truncation of the C terminal tail have been shown to have an effect on large pore formation (18,28). However, the effects on current facilitation/time-course are less well documented. Deletion of the cysteine rich region after TM2 (P2X7-delCcys) resulted in an ~ 6 fold speeding in the time-course of response to ATP and a reduction in the peak current amplitude ($\sim 25\%$ of P2X7 WT) but this was not associated with a change in surface expression. Interestingly the rise time of the P2X7-delCcys mutant was equivalent to the initial phase of the P2X7 WT response (Figure 4A). However the current desensitized by $\sim 60\%$ during the 60s application. The peak current amplitude to a second application of ATP 5 minutes later was reduced to $3.9 \pm 0.3\%$ of the initial response (however the time-course was the same as the initial response). These results show that the Ccys region plays an important role in the generation of the slowly developing current at P2X7 receptors.

To test whether the Ccys region can independently result in a slowing of other P2X receptor currents we inserted the cysteine rich post TM2 P2X7 region into P2X1 and P2X2 receptors (Figure 4). Peak currents at these mutants were reduced by $>90\%$ (compared to WT). This did not result from a change in receptor processing/trafficking as surface expression of the receptors was equivalent to WT P2X1 and P2X2 receptors (Figure 4B). For the P2X2+Ccys there was a modest ~ 2 fold speeding in the rise time and desensitization (Figure 4). At the P2X1 receptor the rate of desensitization was slowed (21 ± 3 and $0.2 \pm 0.2\%$ remaining at end of 60 sec pulse for P2X1+Ccys and WT respectively). These results show that the P2X7 receptor C terminal cysteine rich region can be inserted into other P2X receptor channels and modifies channel gating but does not on its own impart a facilitatory phenotype.

Role of interactions of between pre-TM1 and the P2X7 receptor Ccys rich region.

The present study has shown that for the hP2X7 receptor replacing the pre-TM1 N β

region with that from the P2X2 receptor, or removal of the Ccys region changed the time-course of response and removed facilitation (Figures 1,4,5A). This raised the possibility that the intracellular amino and carboxyl termini regions interact to regulate the time-course of hP2X7 receptors. To test this we made a mutant (P2X7-2N β delCcys) combining the replacement of the pre-TM1 region with deletion of the Ccys region (Figure 5). The amplitude of ATP evoked currents at the P2X7-2N β delCcys were equivalent to those of the individual P2X7-2N β del and P2X7-delCcys mutants (and compared to the hP2X7 receptor reduced by $\sim 70\%$, Figure 5B). Interestingly when these two mutations were combined the rise time of ATP evoked current was equivalent to the hP2X7 first response (18.4 ± 1.4 and 14.6 ± 1.4 s for 10-50% rise time respectively) and slower than either of the individual changes (P2X7-2N β or P2X7-delCcys, Figure 5). However, in contrast to the P2X7 receptor there, was no speeding of the second response (17.3 ± 1.9 s for 10-50% rise), the current desensitised during longer applications (% of peak current remaining at end of a 120 s pulse 80.5 ± 0.7 and 100 % for P2X7-2N β delCcys and WT respectively, $p < 0.05$) the current took longer to deactivate on ATP washout (Figure 5E) and the peak amplitude was reduced by $\sim 50\%$ (2.2 ± 0.4 and 1.0 ± 0.2 μ A for first and second response respectively). These results show that interactions between the juxta-transmembrane regions regulate the time-course of hP2X7 receptors and that time-course and facilitation can be independently regulated.

Functional measurements of P2X7 receptor pore formation.

P2X7 receptor pore dilation is not readily observed in oocytes (29,30). Therefore to characterize effects on pore formation P2X7 receptors were transiently expressed in HEK293-TSA201 cells and agonist evoked ethidium bromide uptake measured. In initial studies we used a sodium chloride based buffer (see methods). 2',3'-O-(4-benzoylbenzoyl)-ATP (BzATP, 300 μ M) evoked rises in ethidium bromide fluorescence for the hP2X7 were 27% of those to rP2X7 similar to that reported previously (31,32). Extracellular ions can have complex effects on P2X7 receptor gating e.g. (33,34), native P2X7 receptor calcium responses were larger in a

sodium free solution (35) and a sodium free sucrose buffer has been used in studies to assay hP2X7 receptors pore dilation (36). In the sucrose (sodium free) buffer ethidium uptake (at 20 mins) at rP2X7 receptors was increased by ~ 2 fold for rat P2X7 receptors compared to sodium buffer ($p < 0.0001$). A larger ~ 5.5 fold increase in uptake of was seen for hP2X7 receptors on replacing sodium with sucrose ($p < 0.0001$ compared to rP2X7). In the sucrose buffer the level of EtBr uptake at 20 mins was now 78 % of that for rP2X7 receptors. These results suggest that the smaller ethidium uptake of the hP2X7 in physiological solutions (compared to rP2X7) does not result predominantly from an inherent difference in the ability of the pore to dilate, but is due to increased sensitivity to the inhibitory effects of sodium in the extracellular solution. Due to the increased ethidium uptake we used the sucrose buffer to characterize pore formation for the hP2X7 receptor mutants.

At the P2X7-2N β chimera ethidium uptake at 20 mins was 12 ± 0.5 % of that for hP2X7 receptors (surface expression levels of the chimera were equivalent to hP2X7 WT) (Figure 7). Ethidium uptake was also reduced significantly at mutants within the N β region that had an effect on time-course (N16P, NRRL, S23N and Y26L; surface expression levels of the mutants were equivalent to hP2X7 WT)(Figure 8). For the mutants NRRL and S23N, that had a time-course equivalent to P2X7-2N β (Figure 2), the $\sim 90\%$ reduction in dye uptake was similar to that seen for P2X7-2N β (Figure 7). The initial rate of rise of the ethidium signal was faster for the P2X7-2N β than for the hP2X7 (% response at 60s as % of peak 32.0 ± 3.1 and $20.5 \pm 1.8\%$ respectively $P < 0.01$). The rate of dye uptake was also significantly faster than hP2X7 for the NRRL and S23N mutants (Figure 8). Taken together these results show that P2X7 receptor mutants where ATP evoked currents were faster had a more rapid initial rate of ethidium uptake. However this was not associated with a high total level of dye uptake.

Ethidium uptake at the hP2X7-delCcys receptor (equivalent surface expression as hP2X7) was also significantly reduced by ~ 95 % compared to the hP2X7 receptor consistent with previous studies (32)(Figure 7). Surprisingly, when the N β domain swap and delCcys modifications were combined ethidium uptake was returned to WT

levels (Figure 7). The results showing that independent modifications in the amino (N β) or carboxyl termini (Ccys) reduce ethidium uptake but the combination of these modifications (P2X7-2N β Ccys) then restores uptake provides strong evidence that interaction between the juxta-transmembrane intracellular regions plays an important role in regulation of large pore formation at P2X7 receptors.

DISCUSSION

The present study has shown using a range of chimeras and point mutations that both the amino and carboxyl termini juxta-transmembrane regions are important for regulation of hP2X7 receptor channel gating; contributing to both the novel facilitatory as well as the pore dilation phenotypes. Combining changes in the amino and carboxyl termini rescued the time-course and large pore formation suggesting that these regions interact to regulate the P2X7 receptor.

The slow rise time of hP2X7 receptor currents in the present study is similar to that reported previously in oocytes (30) and HEK293 cells (20). The facilitation at the rP2X7 receptor has been modelled based on changes in agonist binding (37,38), is not due to changes/increases in surface expression (20), and has both calcium/calmodulin dependent (Cterminal) and calcium independent components (39). The carboxyl terminal calmodulin binding motif is missing from hP2X7 receptors and facilitation is not dependent on calcium ((20) and this study is in calcium free conditions). The return to the slow “naïve” hP2X7 receptor time-course following a 10 minute agonist free period (this study) suggests that calcium independent facilitation is readily reversible and results from a relatively short lived conformational change.

The P2X7-2N β chimera shows that variant residues in the juxta-TM1 amino terminus region play an important role in determining the time-course/facilitation of P2X7 receptor currents. The facilitation of hP2X7 receptor currents requires repeated long applications of agonist to evoke reproducible responses and this leads to blebbing of the cells and pore dilation that can limit the time period over which responses can be recorded. At the P2X7-2N β chimeric receptor reproducible responses to ATP were

readily recorded and due to the fast time course steady state currents could be recorded to brief 5 s agonist applications. We have also shown (unpublished observations) that the P2X7-2N β chimera has the same sensitivity as the hP2X7 receptor to a range of P2X7 receptor selective antagonists. The P2X7-2N β chimera therefore has the potential to be useful for drug screening as it overcomes potential issues associated with the need to give repeated long applications of agonist to deal with the facilitatory nature of hP2X7 receptor currents.

Point mutations within the N β region identified residues associated with the speeding of the current and removal of facilitation. It has previously been shown that mutation of residues comprising the amino terminal consensus sequence for protein kinase C can regulate the time-course of currents and dilation of the P2X7 receptor pore (37). In other P2X receptor subunits mutation of the consensus protein kinase C sequence also has marked effects on channel time-course indicating the importance of this region in channel gating (40,41). However, given that the consensus sequence is conserved in all P2X receptor subunits, other regions of the receptor must be involved in subtype specific differences in time-course/gating i.e. for the slow time-course and facilitation of the P2X7 receptor. In this study we now show that differences in the non-conserved residue within the (S/T)X(K/R) PKC consensus sequence (N16P), and at residue 23 (between the consensus PKC site and TM1) play an important role in P2X7 receptor channel gating. For N16P the faster time-course of the facilitated current was not associated with a reduction in peak amplitude and an asparagine residue at this position is unique to the P2X7 receptor. Interestingly at the P2X2 receptor currents at a cysteine substitution mutant of the corresponding proline residue were reduced by 70% by treatment with the methanethiosulphonate MTSM (42). In addition cysteine mutants of residues equivalent to R20,I21 (V23,V24 in P2X2) were also inhibited by 70-100% by MTSM (42) suggesting this region contributes to ionic permeation. Further evidence for a regulatory role of this region comes from recent work on hP2X7 receptors showing that K17 and V18 are involved in cholesterol sensitivity (32). Taken together a range of studies have

highlighted the important role of variant residues in the pre-TM1 region in regulation of ion channel activity. However, the P2X7 receptor pre-TM1 region does not confer the facilitatory phenotype when the region was swapped in reciprocal chimeras with P2X1 and P2X2 receptors (where responses were faster and showed increased desensitization compared to the WTs). This suggests that the amino terminal juxta-TM1 region does not act independently but regulates gating via interaction with other parts of the receptor.

The deletion of the Ccys region from the P2X7 receptor had no effect on the initial rate of rise of the ATP evoked current (normalized traces were superimposable, Figure 4). However the current then desensitized and did not have the slowly developing secondary component. This desensitizing phenotype corresponds to that described for activation of naïve receptor by low agonist concentrations that has been modelled to occupancy of one or two ATP-binding sites at the naïve receptor (38). Occupancy of the third ATP binding site then favours the transition to the secondary developing current (38). Our data show that deletion of the Ccys region impairs the normal gating transitions required for the secondary component. The Ccys region could be introduced into both P2X1&2 receptors with only modest effects on their time-courses (slowing and speeding respectively). The Ccys region has been shown to be involved in cholesterol sensitivity at P2X7 receptors and it has been proposed that the proximal C terminal region is “in contact with or may dip back into the plasma membrane” (32). The inclusion of the Cys region in P2X1&2 receptors could therefore provide an “additional membrane anchor” of the C terminal region that accounts for the effects on time-course. The ability to swap the Ccys region into P2X1&2 receptors with only modest effects on time-course suggests that it does not independently confer the slow secondary growth in current.

The P2X7-2N β chimera (and S23N and NRRL mutants) as well as P2X7-delCcys mutants had effects not only on the time-course of agonist evoked currents but also reduced ethidium uptake by ~90-95% indicating a significant effect of disrupting both of these regions on pore dilation. The effects of the Ccys deletion are consistent with

a recent study on the hP2X7 receptor showing reduced large pore formation when the region was deleted (32). However at the rP2X7 receptor the rate of dye uptake was enhanced following Ccys deletion (28) indicating species differences in their regulation/properties. To our surprise combination of mutations in the N and C juxta-membrane regions (P2X7-2N β delCcys) rescued the ethidium uptake and the rise-time of peak current to WT levels. The mutation of both regions does not return the receptor completely to WT properties as the current showed some desensitization, was slower to deactivate following agonist removal and peak current amplitudes were reduced by ~75%. These results (and those from other chimeras) highlight that there is no clear correlation between the peak current amplitude, kinetics and pore formation suggesting that the processes are not interdependent. These results also indicate that the P2X7 specific N β and Ccys regions (absent in P2X7-2N β delCcys) are not required for pore dilation. This is consistent with the pore dilation observed at P2X2&4 receptors that vary in their amino terminal region and lack the Ccys insertion (43,44) and suggests that other parts of the receptor underlie pore dilation.

The rescue of dye uptake and rise time at P2X7-2N β delCcys suggests that there is a complex interaction between the N and C terminal regions. Replacement of the N β region of P2X7 with P2X2 limited pore dilation indicating that there is some other region of the receptor that imposes an inhibitory effect. Similarly removal of the Ccys region also limits pore dilation indicating another inhibitory region of the receptor. One possibility is that there was co-evolution of the amino and carboxyl terminal regions to complement one-another. That is either region could exert an inhibitory effect on pore dilation on their own, but when combined they cancel each-other's effects and allow for pore dilation. For example replacement of the N β region of P2X7 with P2X2 removed the positive regulatory interaction between the amino and carboxyl terminal regions with the net result of the inhibitory effect of the Ccys region dominating the dilation phenotype. Similarly deletion of the Ccys region removed the regulatory interaction with the amino terminal N β region and resulted in the net inhibitory effect of the P2X7 receptor N β

region. As the intracellular regions of the zebrafish P2X4 receptor were truncated to aid crystallization there is no structural data on the organization of the intracellular regions of P2X receptors (45,46) to provide a template for modelling potential interactions in the P2X7 receptor.

In summary we show that both the juxta-membrane intracellular amino and carboxyl termini of the hP2X7 receptor are

involved in regulation of the time-course and pore dilation. Our results suggest a complex interaction between the intracellular termini in regulation of channel properties. These regions are some distance from the pore gate and demonstrate that the intracellular regions exert considerable regulatory control on the movement of the transmembrane helices associated with channel opening.

REFERENCES

1. Kaczmarek-Hajek, K., Lorinczi, E., Hausmann, R., and Nicke, A. (2012) Molecular and functional properties of P2X receptors-recent progress and persisting challenges. *Purinergic Signal* **8**, 375-417
2. Surprenant, A., and North, R. A. (2009) Signaling at purinergic P2X receptors. *Annu Rev Physiol* **71**, 333-359
3. Coddou, C., Yan, Z., Obsil, T., Huidobro-Toro, J. P., and Stojilkovic, S. S. (2011) Activation and Regulation of Purinergic P2X Receptor Channels. *Pharmacol Rev* **63**, 641-683
4. Jiang, R., Taly, A., and Grutter, T. (2013) Moving through the gate in ATP-activated P2X receptors. *Trends Biochem Sci* **38**, 20-29
5. North, R. A. (2002) Molecular Physiology of P2X Receptors. *Physiol Rev* **82**, 1013-1067
6. Hechler, B., Lenain, N., Marchese, P., Vial, C., Heim, V., Freund, M., Cazenave, J.-P., Cattaneo, M., Ruggeri, Z. M., Evans, R. J., and Gachet, C. (2003) A role of the fast ATP-gated P2X1 cation channel in the thrombosis of small arteries in vivo. *J. Exp. Med.* **198**, 661-667
7. Yan, D., Zhu, Y., Walsh, T., Xie, D., Yuan, H., Sirmaci, A., Fujikawa, T., Wong, A. C., Loh, T. L., Du, L., Grati, M., Vlajkovic, S. M., Blanton, S., Ryan, A. F., Chen, Z. Y., Thorne, P. R., Kachar, B., Tekin, M., Zhao, H. B., Housley, G. D., King, M. C., and Liu, X. Z. (2013) Mutation of the ATP-gated P2X(2) receptor leads to progressive hearing loss and increased susceptibility to noise. *Proc Natl Acad Sci U S A* **110**, 2228-2233
8. Wilhelm, K., Ganesan, J., Muller, T., Durr, C., Grimm, M., Beilhack, A., Krempl, C. D., Sorichter, S., Gerlach, U. V., Juttner, E., Zerweck, A., Gartner, F., Pellegatti, P., Di Virgilio, F., Ferrari, D., Kambham, N., Fisch, P., Finke, J., Idzko, M., and Zeiser, R. (2010) Graft-versus-host disease is enhanced by extracellular ATP activating P2X7R. *Nat Med* **16**, 1434-1438
9. Sorge, R. E., Trang, T., Dorfman, R., Smith, S. B., Beggs, S., Ritchie, J., Austin, J. S., Zaykin, D. V., Vander Meulen, H., Costigan, M., Herbert, T. A., Yarkoni-Abitbul, M., Tichauer, D., Livneh, J., Gershon, E., Zheng, M., Tan, K., John, S. L., Slade, G. D., Jordan, J., Woolf, C. J., Peltz, G., Maixner, W., Diatchenko, L., Seltzer, Z., Salter, M. W., and Mogil, J. S. (2012) Genetically determined P2X7 receptor pore formation regulates variability in chronic pain sensitivity. *Nat Med* **18**, 595-599
10. Jiang, L. H. (2009) Inhibition of P2X(7) receptors by divalent cations: old action and new insight. *Eur Biophys J* **38**, 339-346
11. Brandle, U., Spielmanns, P., Osteroth, R., Sim, J., Surprenant, A., Buell, G., Ruppersberg, J. P., Plinkert, P. K., Zenner, H.-P., and Glowatzki, E. (1997) Desensitisation of the P2X₂ receptor controlled by alternative splicing. *FEBS Letters* **404**, 294-298
12. Simon, J., Kidd, E. J., Smith, F. M., Chessel, I. P., Murrell-Lagnado, R., Humphrey, P. P. A., and Barnard, E. A. (1997) Localization and functional expression of splice variants of the P2X₂ receptor. *Mol. Pharmacol.* **52**, 237-248
13. Nicke, A., Kuan, Y. H., Masin, M., Rettinger, J., Marquez-Klaka, B., Bender, O., Gorecki, D. C., Murrell-Lagnado, R. D., and Soto, F. (2009) A functional P2X7 splice variant with an alternative transmembrane domain 1 escapes gene inactivation in P2X7 knock-out mice. *J Biol Chem* **284**, 25813-25822

14. Adinolfi, E., Cirillo, M., Woltersdorf, R., Falzoni, S., Chiozzi, P., Pellegatti, P., Callegari, M. G., Sandona, D., Markwardt, F., Schmalzing, G., and Di Virgilio, F. (2010) Trophic activity of a naturally occurring truncated isoform of the P2X7 receptor. *FASEB J* **24**, 3393-3404
15. Werner, P., Seward, E. P., Buell, G., and North, R. A. (1996) Domains of P2X receptors involved in desensitization. *Proc.Natl.Acad.Sci.USA* **93**, 15485-15490
16. Allsopp, R. C., and Evans, R. J. (2011) The intracellular amino terminus plays a dominant role in desensitisation of ATP gated P2X receptor ion channels. *J Biol Chem* **286**, 44691-44701
17. Chaumont, S., Jiang, L. H., Penna, A., North, R. A., and Rassendren, F. (2004) Identification of a trafficking motif involved in the stabilization and polarization of P2X receptors. *J Biol Chem* **279**, 29628-29638
18. Surprenant, A., Rassendren, F., Kawashima, E., North, R. A., and Buell, G. (1996) The cytolytic P2Z receptor for extracellular ATP identified as a P2X receptor P2X7. *Science* **272**, 735-738
19. Browne, L. E., Compan, V., Bragg, L., and North, R. A. (2013) P2X7 receptor channels allow direct permeation of nanometer-sized dyes. *J.Neurosci.* **33**, 3557-3566
20. Roger, S., Gillet, L., Baroja-Mazo, A., Surprenant, A., and Pelegrin, P. (2010) C-terminal calmodulin-binding motif differentially controls human and rat P2X7 receptor current facilitation. *J Biol Chem* **285**, 17514-17524
21. Shemon, A. N., Sluyter, R., Fernando, S. L., Clarke, A. L., Dao-Ung, L. P., Skarratt, K. K., Saunders, B. M., Tan, K. S., Gu, B. J., Fuller, S. J., Britton, W. J., Petrou, S., and Wiley, J. S. (2006) A Thr357 to Ser Polymorphism in Homozygous and Compound Heterozygous Subjects Causes Absent or Reduced P2X7 Function and Impairs ATP-induced Mycobacterial Killing by Macrophages. *J Biol Chem* **281**, 2079-2086
22. Denlinger, L. C., Sommer, J. A., Parker, K., Gudipaty, L., Fisette, P. L., Watters, J. W., Proctor, R. A., Dubyak, G. R., and Bertics, P. J. (2003) Mutation of a dibasic amino acid motif within the C terminus of the P2X7 nucleotide receptor results in trafficking defects and impaired function. *J Immunol* **171**, 1304-1311
23. Wilson, H. L., Wilson, S. A., Surprenant, A., and North, R. A. (2002) Epithelial Membrane Proteins Induce Membrane Blebbing and Interact with the P2X7 Receptor C Terminus. *J Biol Chem* **277**, 34017-34023.
24. Ennion, S., Hagan, S., and Evans, R. J. (2000) The role of positively charged amino acids in ATP recognition by human P2X1 receptors. *J. Biol. Chem.* **275**, 29361-29367
25. Fenwick, E. M., Marty, A., and Neher, E. (1982) A patch-clamp study of bovine chromaffin cells and of their sensitivity to acetylcholine. *J Physiol* **331**, 577-597
26. Fryatt, A. G., and Evans, R. J. (2014) Kinetics of conformational changes revealed by voltage-clamp fluorometry give insight to desensitization at ATP-gated human P2X1 receptors. *Mol Pharmacol* **86**, 707-715
27. Rettinger, J., and Schmalzing, G. (2003) Activation and Desensitization of the Recombinant P2X1 Receptor at Nanomolar ATP Concentrations. *J Gen Physiol* **121**, 451-461
28. Jiang, L. H., Rassendren, F., Mackenzie, A., Zhang, Y. H., Surprenant, A., and North, R. A. (2005) N-methyl-D-glucamine and propidium dyes utilize different permeation pathways at rat P2X(7) receptors. *Am J Physiol Cell Physiol* **289**, C1295-1302
29. Petrou, S., Ugur, M., Drummond, R. M., Singer, J. J., and Walsh, J. V., Jr. (1997) P2X7 purinoceptor expression in *Xenopus* oocytes is not sufficient to produce a pore-forming P2Z-like phenotype. *FEBS Lett* **411**, 339-345
30. Klapperstuck, M., Buttner, C., Bohm, T., Schmalzing, G., and Markwardt, F. (2000) Characteristics of P2X7 receptors from human B lymphocytes expressed in *Xenopus* oocytes. *Biochim Biophys Acta* **1467**, 444-456
31. Rassendren, F., Buell, G., Virginio, C., Collo, G., North, R. A., and Surprenant, A. (1997) The permeabilizing ATP receptor, P2X7. *J.Biol.Chem.* **272**, 5482-5486
32. Robinson, L. E., Shridar, M., Smith, P., and Murrell-Lagnado, R. D. (2014) Plasma Membrane Cholesterol as a Regulator of Human and Rodent P2X7 Receptor Activation and Sensitization. *J Biol Chem* **289**, 31983-31994

33. Yan, Z., Li, S., Liang, Z., Tomic, M., and Stojilkovic, S. S. (2008) The P2X7 receptor channel pore dilates under physiological ion conditions. *J Gen Physiol* **132**, 563-573
34. Riedel, T., Schmalzing, G., and Markwardt, F. (2007) Influence of extracellular monovalent cations on pore and gating properties of P2X7 receptor-operated single-channel currents. *Biophys J* **93**, 846-858
35. Wiley, J. S., Chen, R., Wiley, M. J., and Jamieson, G. P. (1992) The ATP4- receptor-operated ion channel of human lymphocytes: inhibition of ion fluxes by amiloride analogs and by extracellular sodium ions. *Arch.Biochem.Biophys.* **292** (2), 411-418
36. YaQin, J., Qi, Y., and ShiYou, L. (2013) Cellular fluorescent high-throughput screening assays of the ATP-gated P2X7 receptor. *Chinese Science Bulletin* **58**, 2812-2819
37. Yan, Z., Khadra, A., Li, S., Tomic, M., Sherman, A., and Stojilkovic, S. S. (2010) Experimental characterization and mathematical modeling of P2X7 receptor channel gating. *J.Neurosci.* **30**, 14213-14224
38. Khadra, A., Tomic, M., Yan, Z., Zemkova, H., Sherman, A., and Stojilkovic, S. S. (2013) Dual gating mechanism and function of P2X7 receptor channels. *Biophys J* **104**, 2612-2621
39. Roger, S., Pelegrin, P., and Surprenant, A. (2008) Facilitation of P2X7 receptor currents and membrane blebbing via constitutive and dynamic calmodulin binding. *J.Neurosci.* **28**, 6393-6401
40. Boue-Grabot, E., Archambault, V., and Seguela, P. (2000) A protein kinase C site highly conserved in P2X subunits controls the desensitisation kinetics of P2X2 ATP-gated channels. *J. Biol. Chem.* **275**, 10190-10195
41. Ennion, S. J., and Evans, R. J. (2002) P2X(1) receptor subunit contribution to gating revealed by a dominant negative PKC mutant. *Biochem Biophys Res Commun* **291**, 611-616.
42. Jiang, L.-H., Rassendren, F., Spelta, V., Surprenant, A., and North, R. A. (2001) Amino acid residues involved in gating identified in the first membrane-spanning domain of the rat p2X2 receptor. *J. Biol. Chem.* **276**, 14902-14908
43. Virginio, C., MacKenzie, A., Rassendren, F. A., North, R. A., and Surprenant, A. (1999) Pore dilation of neuronal P2X receptor channels. *Nature Neurosci.* **2**, 315-321
44. Khakh, B. S., Bao, X. R., Labarca, C., and Lester, H. A. (1999) Neuronal P2X transmitter-gated cation channels change their ion selectivity in seconds. *Nature Neuroscience* **2**, 322-330
45. Kawate, T., Michel, J. C., Birdsong, W. T., and Gouaux, E. (2009) Crystal structure of the ATP-gated P2X(4) ion channel in the closed state. *Nature* **460**, 592-598
46. Hattori, M., and Gouaux, E. (2012) Molecular mechanism of ATP binding and ion channel activation in P2X receptors. *Nature* **485**, 207-212

Acknowledgements: This work was supported by the Wellcome Trust (080487/Z/06/Z) and the Medical Research Council (MR/K027018/1). We thank Manijeh Maleki-Dizaji for technical support. We thank Dr Alistair Fryatt for data on the time-course of P2X receptor currents recorded using the voltage clamp flurometry perfusion system.

FOOTNOTES

The abbreviations used are: BzATP, 2',3'-O-(4-benzoylbenzoyl)-ATP, Ccys, cysteine rich; PKC, protein kinase C; TM, transmembrane.

Figure legends.

Figure 1. The pre-TM1 region regulates hP2X7 facilitation. **A.)** Representative traces showing the speeding/facilitation of WT P2X7 receptor responses to prolonged (60 s, indicated by bar) repeat applications of 1 mM ATP at 3 minute intervals (black, red, blue trace consecutively). **B.)** Increasing the time interval between repeat ATP applications 2 and 3 (black trace to red trace 3 min interval, red trace to blue trace 10 minute interval) returns the receptor response back to its naïve state. **C.)** Schematics and representative traces showing the effect of replacing the entire N-terminus of the hP2X7 receptor (black) with that of hP2X2 receptor (magenta), or just the 16 pre-TM1 amino acids (P2X7-2N β). Traces represent first (black) and second (red) receptor responses (60 s application at 3 min intervals) to 1 mM ATP. **D.)** Histogram summary showing the 10-50% rise times (s) of first (black) versus second (red) receptor response to EC₉₀ ATP (1 mM ATP at P2X7, 100 μ M ATP at P2X7-2N, P2X7-2N β and P2X2) at 3 minute intervals. Insert shows concentration response to ATP for P2X7 and P2X7-2N β receptors. **E.)** Histogram summary showing the peak amplitude (μ A) of the response to the first ATP application. Inset shows a representative Western blot of the equivalent levels of surface expression of P2X7 and P2X7-2N β receptors. Data are shown as mean \pm S.E.M. ($n = 7-25$). *, $p < 0.05$; ****, $p < 0.0001$.

Figure 2. Contribution of variant pre-TM1 residues P2X7 receptor current facilitation. **A.)** Amino acid sequence line up showing the pre-TM1 residues of the hP2X7 receptor (top) and the hP2X2 receptor (bottom). Non-conserved amino acids are shown in green. **B.)** Representative traces (first and second response shown in black and red respectively) demonstrating the effect of pre-TM1 substitution of non-conserved amino acid residues between the P2X7 and P2X2 receptor in response to ATP (1 mM, 60 s agonist addition at 3 min intervals). **C & D.)** Histogram summaries showing the peak current amplitude (μ A) and 10-50% rise time (s) of the first and second responses to ATP. Statistical significance shown in black is relative to the P2X7 WT and in red for between the first and second response at a particular receptor. Data are shown as mean \pm S.E.M. ($n = 4-25$), **, $p < 0.01$; ***, $p < 0.001$ ****, $p < 0.0001$.

Figure 3. Contribution of the pre-TM1 region to the time-course of P2X1, P2X2 and P2X7 receptor currents. **A.)** Normalized traces demonstrating the effect on time-course of pre-TM1 β -region substitution of P2X1 into P2X7, P2X7 into P2X2 and P2X7 into P2X1 receptors respectively. In each case, ATP was applied for the duration indicated by the grey bar (1 mM for P2X7 and P2X7-1N β , 100 μ M for P2X1 and P2X2 WT receptors and chimeras). **B, C & D)** Histograms showing the peak current amplitude (μ A), 10-50% rise time (s) and % current remaining at the end of the ATP pulse (EC₉₀ concentration of ATP applied for the duration as indicated on the adjacent traces). Western blots show surface expression of the respective WT and chimeric receptors. For P2X2 and P2X7 receptors the lanes are from the same blot and exposure, the white line between them indicates they have been re-ordered from that loaded on the gel. Data are shown as mean \pm S.E.M. ($n = 4-25$). **, $p < 0.01$; ***, $p < 0.001$ ****, $p < 0.0001$

Figure 4. Contribution of the hP2X7 receptor C-terminal cysteine rich region (amino acid residues 362 – 379) to time-course. **A.)** Peak normalized traces showing the effect on time-course of cysteine rich region deletion of the WT P2X7 receptor, insertion into the P2X2 receptor and insertion into the P2X1 receptor respectively. ATP application as indicated by the grey bar (1 mM for P2X7 and P2X7-1N β , 100 μ M for P2X1 and P2X2 WT receptors and chimeras). For the P2X7-delC_{cys} the trace in yellow shows the relative amplitude of the response compared to the P2X7 receptor to show the similar time-course to the initial rise time of the P2X7 receptor response. **B, C & D)** Histograms showing the peak current amplitude (μ A), 10-50% rise time (s) and % current remaining at the end of the ATP pulse. Western blots show equivalent surface expression of the respective WT and chimeric receptors (the WT control for P2X7 is the same as used in Figure 3, the original blot compared P2X7 WT with a range of P2X7 chimeras). Data are mean \pm S.E.M. ($n=4-25$). **, $p < 0.01$; ***, $p < 0.001$ ****, $p < 0.0001$ ($n = 4-25$).

Figure 5. Functional interaction between the pre-TM1 β -region and C-terminal cysteine rich region and its effect on P2X7 receptor time-course. **A.)** Peak normalized traces showing the effect of deletion of the cysteine rich region deletion from the P2X7 receptor (P2XYdelCcys, yellow) compared to the WT P2X7 receptor (black) and the P2X7-2N β chimera (red). ATP application indicated by the grey bar (1 mM for 60 s). **B).** Peak normalized traces showing reversion to slow receptor facilitation at the P2X7-2N β delCcys chimera (blue) with both 60 s (i) and 120 s (ii) applications of 1 mM ATP highlighting the faster desensitisation of the chimeric receptor. **C), D) & E),** Histograms showing the peak amplitude (μ A), rise time (s) and time to 50% decay (s) at the end of the ATP pulse for the P2X7 receptor versus the P2X7-2N β delCcys chimera. Western blots show equivalent levels of surface expression of P2X7 and the P2X7-2N β delCcys chimera. Data are mean \pm S.E.M. ($n=4-25$). ***, $p < 0.001$ ****, $p < 0.0001$.

Figure 6. Sucrose buffer enhances ethidium bromide dye uptake through the P2X7 receptor pore. **A & B).** Representative FlexStation responses showing agonist-induced dye uptake through the rat (A) and human (B) P2X7 receptor when pre-loaded for 30 minutes with ethidium bromide (20 μ M) under different buffer conditions (sucrose dye uptake buffer versus normal extracellular solution (NES) low divalent buffer). Agonist addition (300 μ M BzATP) at 240 s is indicated by the arrow. **C).** Histogram summary showing the total RFU change under the different buffer loading conditions. **D).** Histogram summary showing the fold increase in dye uptake in sucrose dye uptake buffer compared to low divalent NES buffer. Data are mean \pm S.E.M. ****, $p < 0.0001$ ($n = 24$).

Figure 7. Interaction of the intracellular pre-TM1 β -region and C-terminal cysteine rich region of the P2X7 receptor regulates pore formation and dye uptake. **A.)** FlexStation responses demonstrating agonist induced dye uptake through the pore of the P2X7 receptor, reduced dye uptake through the N-terminus chimeric receptor and C-terminus deletion receptor (P2X7-2N β and P2X7 delCcys respectively) and “P2X7-like” dye uptake through the P2X7-2N β delCcys mutant receptor. Agonist addition (300 μ M BzATP) at 240 s is indicated by the arrow. Western blots show equivalent levels of surface expression for P2X7 receptor WT and mutants. **B).** P2X7-2N β receptor response normalised to the peak P2X7 receptor response identifying an increased initial rate of dye uptake. **C).** P2X7-2N β delCcys receptor response normalised to the peak P2X7 receptor response demonstrating the relative dye uptake speeds through these two receptors. **D).** Histogram summary showing the relative dye uptake for each receptor. **E).** Histogram summary demonstrating the amount of dye uptake (as a percentage of the peak maximum) one minute post BzATP addition (300 μ M BzATP addition made at 240 s). Data are mean \pm S.E.M. **, $p < 0.01$; ****, $p < 0.0001$ ($n = 7-21$).

Figure 8. Effects of mutations in the P2X7 receptor pre-TM1 β -region on pore formation and dye uptake. **A.)** FlexStation responses demonstrating agonist induced dye uptake through the pore of the P2X7 receptor, reduced dye uptake through the N-terminus mutants N16P, Y26L, S23N and NRRL. Agonist addition (300 μ M BzATP) at 240 s is indicated by the arrow. S.E.M. are only shown in one direction so as not to obscure the mean values. **B).** Histogram summary showing the relative peak dye uptake for each receptor. Western blots show equivalent levels of surface receptor expression for P2X7 receptor WT and mutants. **C).** Histogram summary demonstrating the amount of dye uptake (as a percentage of the peak maximum) one minute post BzATP addition (300 μ M BzATP addition made at 240 s). Data are mean \pm S.E.M. **, $p < 0.01$; ***, $p < 0.001$ ****, $p < 0.0001$ ($n = 24$).

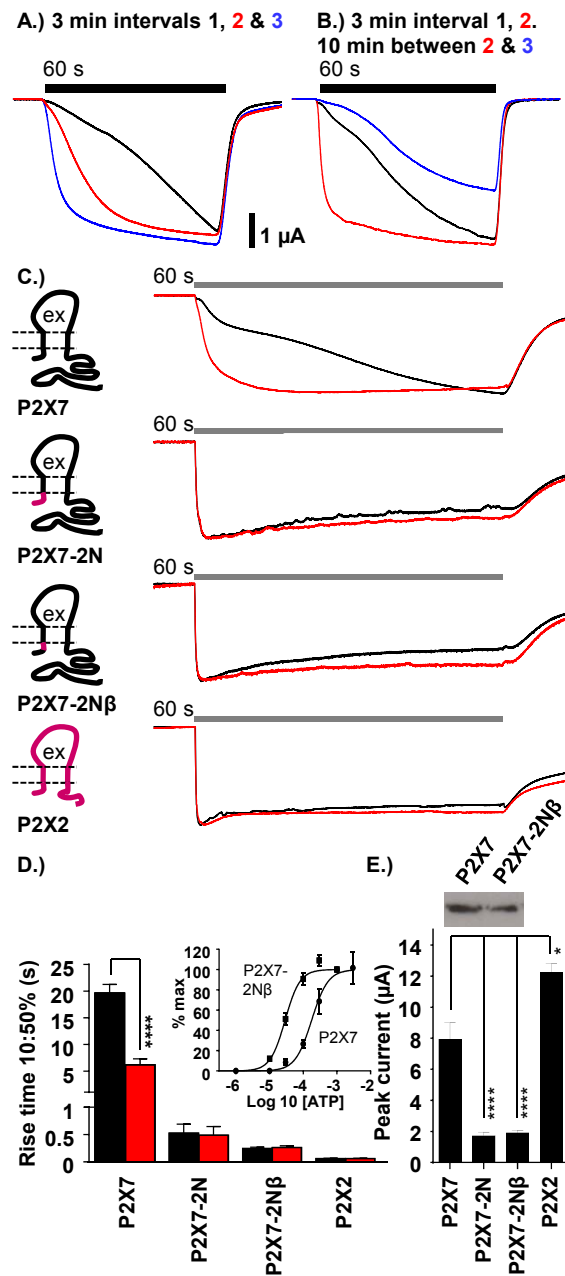


Figure 1.

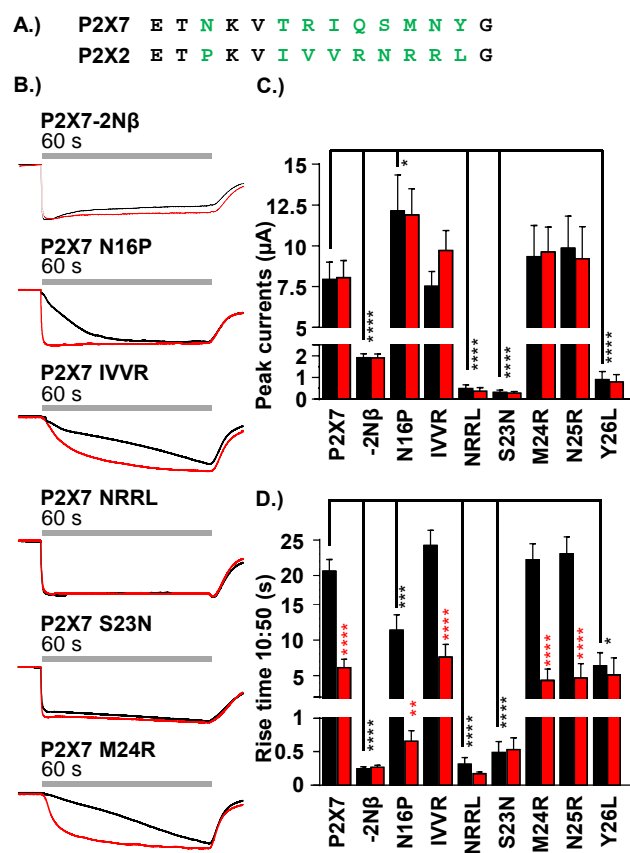


Figure 2.

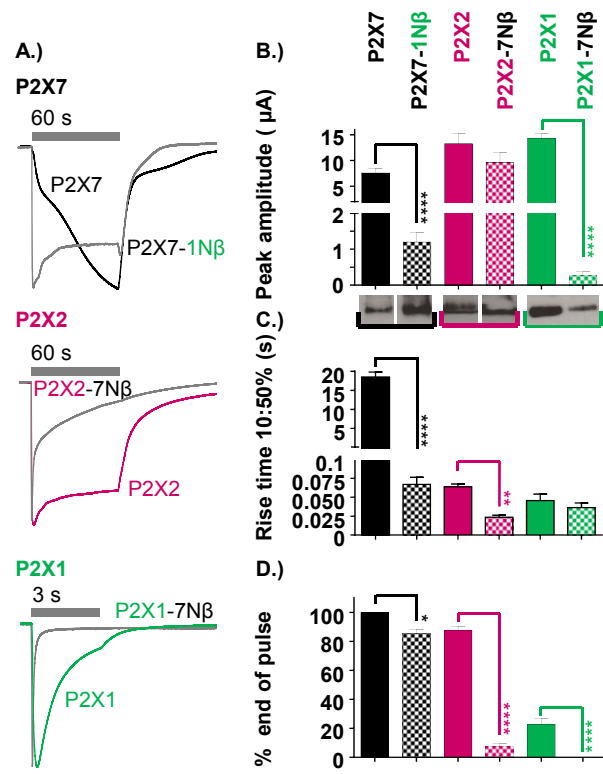


Figure 3.

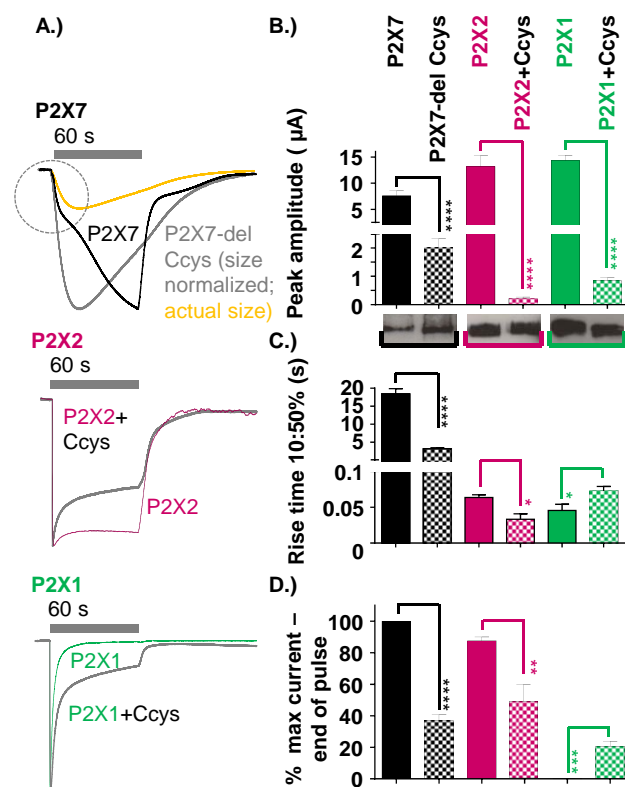


Figure 4

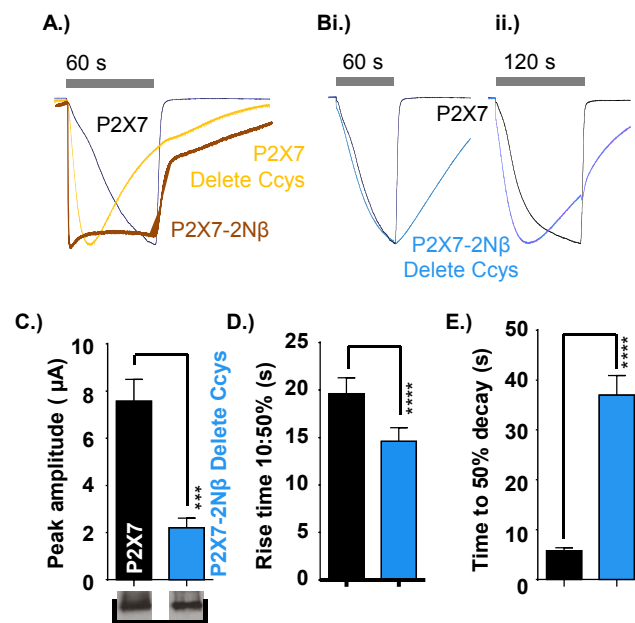


Figure 5.

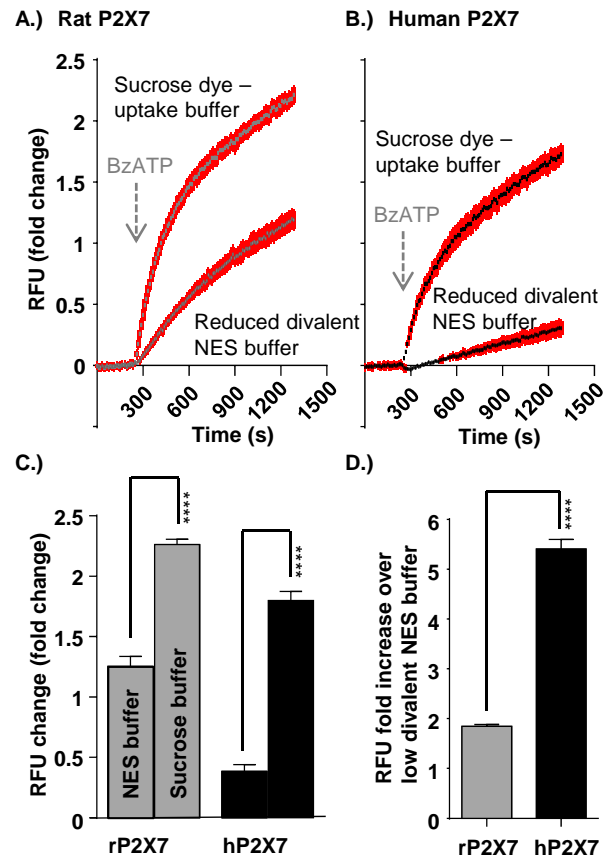


Figure 6.

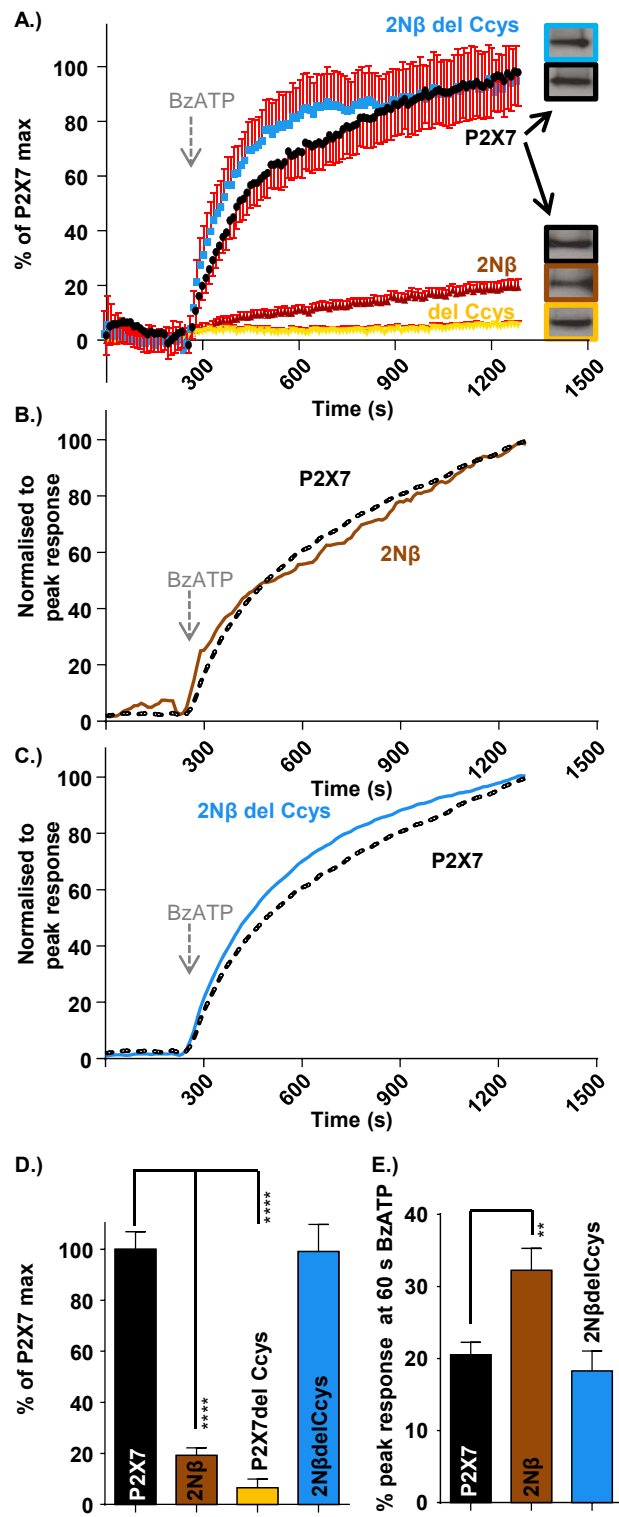


Figure 7.

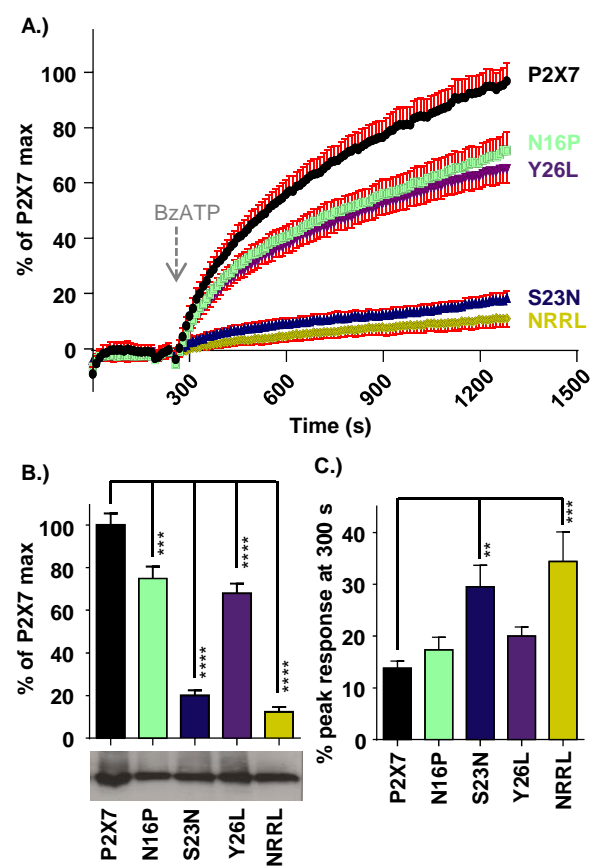


Figure 8.