

Relative stability of ploidy in a marine *Synechococcus* across various growth conditions

Blanca Perez-Sepulveda ^{1†}, Frances Pitt,¹

An N. N'Guyen,^{2‡} Morgane Ratin,²

Laurence Garczarek,² Andrew Millard³ and

David J. Scanlan^{1*}

¹School of Life Sciences, University of Warwick, Coventry, UK.

²Sorbonne Universités, UPMC-Université Paris 06, CNRS UMR 7144, Station Biologique, Roscoff, France.

³Department of Infection Immunity and Inflammation, University of Leicester, Leicester, UK.

Summary

Marine picocyanobacteria of the genus *Synechococcus* are ubiquitous phototrophs in oceanic systems. Consistent with these organisms occupying vast tracts of the nutrient impoverished ocean, most marine *Synechococcus* so far studied are monoploid, i.e., contain a single chromosome copy. The exception is the oligoploid strain *Synechococcus* sp. WH7803, which on average possesses around 4 chromosome copies. Here, we set out to understand the role of resource availability (through nutrient depletion growth) and physical stressors (UV, exposure to low and high temperature) in regulating ploidy level in this strain. Using qPCR to assay ploidy status we demonstrate the relative stability of chromosome copy number in *Synechococcus* sp. WH7803. Such robustness in maintaining an oligoploid status even under nutrient and physical stress is indicative of a fundamental role, perhaps facilitating recombination of damaged DNA regions as a result of prolonged exposure to oxidative stress, or allowing added flexibility in gene expression via possessing multiple alleles.

Introduction

Low nutrient concentration across vast tracts of the world's oceans has meant that organisms have to compete for scarce resources (Raven, 1998). In oligotrophic waters, this has led to small cells with high surface area to volume ratios containing a plethora of nutrient transporters to optimize acquisition of these limiting resources. As well as optimising acquisition processes, organisms have also reduced demand, leading to genome streamlining in dominant phototroph [e.g., *Prochlorococcus*, see Partensky and Garczarek (2010)], and heterotroph [e.g., SAR11, see Giovannoni *et al.* (2005)] populations, as well as a decline in %GC content, reducing nitrogen (N) requirements per genome. More specifically in P-deplete waters, a replacement of phosphorus (P) containing lipids for non-P containing lipids occurs, again conserving or recycling previously obtained resources (Van Mooy *et al.*, 2006; Carini *et al.*, 2015; Sebastián *et al.*, 2016). Such resource acquisition or minimization strategies is to some extent in contrast to the observation of the release of extracellular vesicles by such organisms in which hard won resources (proteins, nucleic acids or lipids) are 'lost' to the environment, presumably due to specific communication or horizontal gene transfer functions (Biller *et al.*, 2014).

In cyanobacteria, another potential contradiction to the idea of reducing resource utilization during growth in nutrient poor environments is that many strains of cyanobacteria are known to be oligoploid or polyploid, i.e., contain multiple copies of their chromosome (Griese *et al.*, 2011). Such multiplication of genome copies is in direct contrast to the phenomenon of genome streamlining, where many genes have been lost (Kettler *et al.*, 2007) or potentially outsourced (Morris *et al.*, 2012). High levels of ploidy appear particularly prevalent in freshwater cyanobacteria (Griese *et al.*, 2011), including unicellular species such as *Synechocystis* sp. PCC 6803, the latter strain also demonstrating high variability in chromosome copy number dependent on growth conditions (Zerulla *et al.*, 2016). In contrast, members of the marine *Synechococcus* lineage, which are ubiquitous in oceanic waters (see Scanlan *et al.*, 2009; Scanlan, 2012), are largely monoploid in those few strains characterized (Armbrust *et al.*, 1989; Binder and Chisholm, 1995; Griese *et al.*, 2011), potentially consistent with

Received 23 August, 2017; accepted 6 January, 2018. *For correspondence. E-mail d.j.scanlan@warwick.ac.uk; Tel. (+44) 24 76 528363; Fax (+44) 24 76 523701. Present addresses: [†]Functional and Comparative Genomics, Institute of Integrative Biology, University of Liverpool, Liverpool, UK. [‡]Institute of Biotechnology and Food Technology, Industrial University of Ho Chi Minh City, Ho Chi Minh City, Vietnam

© 2018 The Authors. Environmental Microbiology published by Society for Applied Microbiology and John Wiley & Sons Ltd.

This is an open access article under the terms of the Creative Commons Attribution License, which permits use, distribution and reproduction in any medium, provided the original work is properly cited.

inhabiting this resource limited environment. However, an exception is marine *Synechococcus* sp. WH7803 that possesses between 3 and 10 chromosome copies, dependent on the method of assessment, i.e., flow cytometry or qPCR (Binder and Chisholm, 1995; Griesse *et al.*, 2011). Given that *Synechococcus* sp. WH7803 is one of the few genetically tractable marine *Synechococcus* strains (Brahamsha, 1996) we set out here to determine if ploidy status in this strain is regulated by various environmental parameters to ultimately give us a window into understanding the role of ploidy in these organisms.

Results and discussion

Ploidy level in *Synechococcus* sp. WH7803 was determined by qPCR. For more details on the materials and methods, please refer to Appendix S1. DNA extraction for the qPCR assay used mechanical lysis, which was shown to be highly efficient at lysing cellular material compared to chemical lysis (data not shown). The detection limit for the qPCR assay was 10 000 cells (Supporting Information Fig. S1), which was determined by flow cytometric sorting of *Synechococcus* sp. WH7803 cells. Salts in the artificial seawater medium inhibited the qPCR reaction, detecting an order of magnitude less material (Supporting Information Fig. S1). To avoid salt inhibition of the qPCR, different methods were tested for desalting the DNA samples before assay. The most efficient method, i.e., requiring the least amount of time for desalting and without losing DNA, was centrifugation, re-suspension with nuclease-free water and mechanical lysis of cells (Supporting Information Fig. S1). As a control for the potential oligoploid nature of *Synechococcus* sp. WH7803, we also assessed chromosome copy number in a 'sister' strain *Synechococcus* sp. WH7805, which was previously suggested to be monoploid based on flow cytometry analysis (Binder and Chisholm, 1995). Both *Synechococcus* strains were

isolated in the same year (1978) and from the same location (33°45'N, 67°30'W) in the Sargasso Sea at 25 m depth (Waterbury *et al.*, 1986) and are closely related phylogenetically (Urbach *et al.*, 1998; Fuller *et al.*, 2003; Farrant *et al.*, 2016), providing an appropriate comparison of ploidy status. Primer selection for the qPCR assay for *Synechococcus* sp. WH7803 and WH7805 was based both on their specificity to each strain and that the same amplification efficiency for each primer set was obtained (see Supporting Information Fig. S2).

Chromosome copy number was determined using both *Synechococcus* sp. WH7805 cells alone or with an equimolar amount of *Synechococcus* sp. WH7803 cells to assess the reproducibility of the release of nucleic acids by cell lysis. Both experiments gave the same results, with an average of 4.6 ± 2.2 copies for *Synechococcus* sp. WH7803 compared to 1.1 ± 0.3 copies of the *Synechococcus* sp. WH7805 chromosome per cell, confirming the oligoploid nature of *Synechococcus* sp. WH7803 and that *Synechococcus* sp. WH7805 is monoploid. It is important to remember that these copy number values represent a population average with the potential in *Synechococcus* sp. WH7803 at least, that copy number in individual cells is more variable.

Given the higher chromosome copy number in *Synechococcus* sp. WH7803 compared to *Synechococcus* sp. WH7805, this could suggest an increase in cell size in the former strain. We thus assessed cell size by flow cytometry following staining with SYBR Green I in a mix of *Synechococcus* sp. WH7803 and WH7805 cells obtained from the exponential phase of growth. Forward scatter as a proxy for cell size showed cells of both cultures were the same size (Fig. 1A), whereas a shift in green fluorescence was observed for *Synechococcus* sp. WH7803 (Fig. 1B). This indicates that whilst the DNA content was higher in *Synechococcus* sp. WH7803, cell size was the same for both strains.

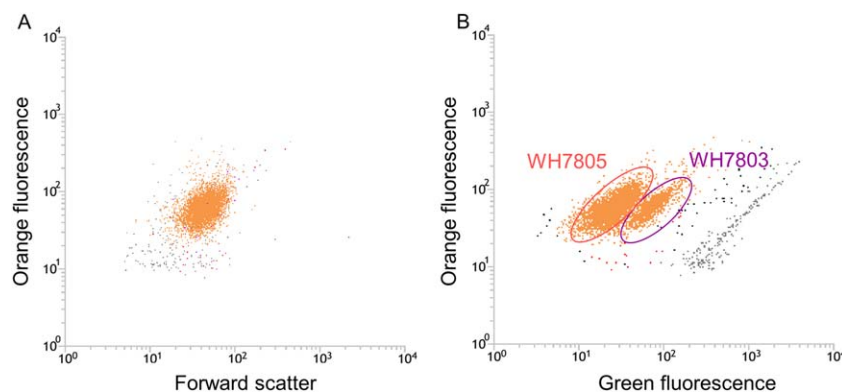


Fig. 1. Flow cytometry plot of a mixed culture of *Synechococcus* sp. WH7805 and *Synechococcus* sp. WH7803 stained with SYBR green I. (A) Orange fluorescence (580 nm), for detection of phycoerythrin, versus forward scatter. (B) Orange fluorescence versus green fluorescence (530 nm), for detection of SYBR green I DNA staining. *Synechococcus* sp. WH7803 and *Synechococcus* sp. WH7805 cells are indicated by purple and red circles respectively.

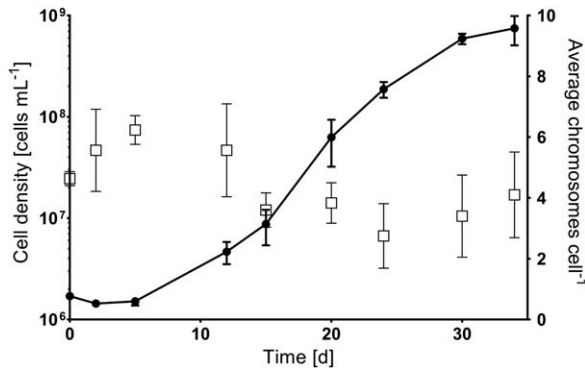


Fig. 2. Assessment of chromosome copy number in *Synechococcus* sp. WH7803 throughout growth. The left y axis depicts cell density (cells mL⁻¹; filled circles) and the right y axis the average chromosome copy number (open squares) of three biological replicates (and three technical replicates). Error bars represent standard deviation.

Determination of chromosome copy number in *Synechococcus* sp. WH7803 through the growth phase

We next determined chromosome copy number in *Synechococcus* sp. WH7803 during the lag phase, mid exponential, late exponential and early stationary phases of growth (Fig. 2). Ploidy level remained relatively stable throughout growth with a mean of 4.8 ± 1.4 copies per cell and no significant difference (t test: $P > 0.05$) between phases, though with a higher value at the end of the lag phase (ca 6 copies per cell) and lower value towards the end of the linear phase (ca. 3 copies per cell). Note though the relatively high coefficient of variation between replicates (CV = 28%), which as mentioned above may be linked to the additional variability in chromosome copy number in individual cells.

The relative stability of chromosome copy number in *Synechococcus* sp. WH7803 during growth is similar to that observed in the oligoploid freshwater cyanobacterium *Synechococcus elongatus* PCC 7942 (Griese *et al.*, 2011), which also shows an increase in ploidy at the end of the lag phase (Watanabe *et al.*, 2015). In contrast, the Archaea *Halobacterium salinarum* and *Halovorax volcanii* and the freshwater cyanobacterium *Synechocystis* sp. PCC 6803 all show higher chromosome copy numbers during exponential growth phase and a subsequent reduction in ploidy level when cells enter stationary phase (Breuert *et al.*, 2006; Griese *et al.*, 2011). Explaining such differences in chromosome copy number across growth also requires knowledge of how chromosomes segregate during cell division. In *Synechococcus elongatus* PCC 7942, chromosomes are spatially ordered along the long axis of the cell in a uniform way, which along with accurate mid-cell septum placement allows for near-optimal segregation of chromosomes to daughter cells (Jain *et al.*, 2012). In contrast, in *Synechocystis* sp. PCC

Table 1. *Synechococcus* sp. WH7803 growth rates and chromosome copy number under nutrient deplete and physical stress conditions.

	μ [d ⁻¹]	Chromosomes cell ^{-1a}	CV %
Control	0.24 ± 0.01	4.8 ± 1.4	28
-P	0.16 ± 0.02	3.7 ± 1.4	36
-N	0.19 ± 0.03	3.7 ± 1.4	36
-Fe	0.14 ± 0.03	3.0 ± 1.1	36
UV	nd	5.1 ± 1.7	33
High temperature	nd	4.7 ± 1.8	37
Low temperature	nd	4.2 ± 1.9	46

nd, not determined.

a. Average chromosomes cell⁻¹ across all time points.

CV %, Coefficient of variation expressed in percentage.

6803, segregation occurs late during the cell cycle potentially in a random and passive way (Schneider *et al.*, 2007) similar to that found in a filamentous cyanobacterium (Hu *et al.*, 2007). However, no information is currently available for marine *Synechococcus* strains.

How does variation in environmental conditions affect *Synechococcus* sp. WH7803 chromosome copy number?

Synechococcus sp. WH7803 grown under -N, -P or -Fe conditions showed a relatively stable chromosome copy number (Table 1) despite either a reduced growth rate (-P conditions) or growth arrest (-Fe, -N) (Bergkessel *et al.*, 2016). Specifically, the copy number per cell decreased marginally by 1.2 ± 0.5 chromosome copies per cell under -N and -P conditions compared to the control (t test: $P < 0.05$), but more so under Fe starvation (1.9 ± 0.4 fewer chromosomes per cell; t test: $P < 0.0001$) (Table 1, Fig. 3). The marginal decrease in chromosome copy number under P-deplete conditions in *Synechococcus* sp. WH7803 contrasts with that observed in the archaeon *H. volcanii* and the cyanobacterium *Synechocystis* sp. PCC 6803, which decrease chromosome copy number substantially under such conditions, from 20 under normal growth conditions to 2 under P-deplete growth [*H. volcanii*, Zerulla *et al.* (2014)] or from 50 (P-rich) to 1 (P-starved) for *Synechocystis* sp. PCC 6803 (Zerulla *et al.*, 2016).

Physical stressors (high temperature, low temperature and UV exposure) also had little effect on the ploidy status of *Synechococcus* sp. WH7803 with no significant difference compared to unstressed control cultures (t test: $P > 0.05$; Table 1).

Conclusions

Synechococcus sp. WH7803 appears unusual amongst those marine *Synechococcus* strains assessed for ploidy

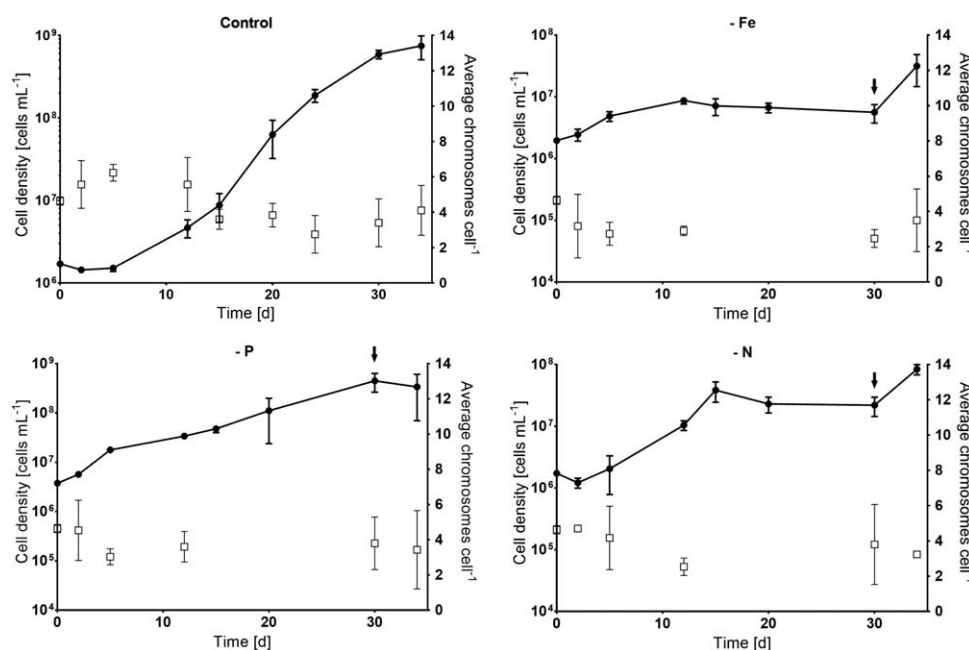


Fig. 3. Assessment of chromosome copy number during growth of *Synechococcus* sp. WH7803 under standard (control) and nutrient deplete (-Fe, -P and -N) conditions. Growth curve (left y-axis; filled circles) and the average chromosome copy number (right y-axis; open squares) of three biological replicates (and three technical replicates) during growth. After 30 days of growth in nutrient deplete medium, nutrient levels were restored to those in ASW medium (black arrows) and growth monitored for a further 4 days. Chromosome copy number was determined at all time-points except time 12 h and 15 h in nutrient-deplete experiments. Error bars represent standard deviation. Note that for clarity, the left y-axis scale varies between conditions.

status in containing on average around 4 chromosome copies per cell. As shown here, such a ploidy status appears relatively invariant irrespective of environmental conditions and whilst it is unknown whether polyploidy only arose following isolation of this organism into culture, ploidy level indeed appears stable across time given similar indications of ploidy in the same strain in the mid-90's (Binder and Chisholm, 1995). In contrast, most marine *Synechococcus* so far examined appear to be monoploid, including *Synechococcus* sp. WH7805, a strain closely related to WH7803 and despite the growth of these strains in a nutrient-rich medium over several decades. Such a monoploid nature is consistent with the idea of reducing resource demand for organisms inhabiting nutrient-poor conditions but does not explain the polyploid character of the *Synechococcus* sp. WH7803 strain. Perhaps a polyploid species like WH7803 possesses gene/DNA sequence redundancy that could facilitate recombination of DNA damaged regions as result of oxidative stress resulting, e.g., from prolonged exposure to high irradiance or UV radiation, using unmodified chromosomes as a template. Alternatively, ploidy may allow added flexibility in gene expression via possessing multiple alleles, a phenomenon recently observed in a diploid diatom (Mock *et al.*, 2017), providing an advantage over monoploid organisms to adapt to different environments and threats (Makarova *et al.*, 2001;

Soppa, 2013). Certainly, further work is required to assess whether the WH7803 strain is unusual in this respect or whether polyploidy is more prevalent in natural marine *Synechococcus* populations than currently thought.

Acknowledgements

We would like to thank J. Pittera, H. Doré, C. Six, T. Grébert and F. Partensky for their help with sampling. This work was supported by the UK Natural Environment Research Council through Research Grant NE/N003241/1 and by the French 'Agence Nationale de la Recherche' program SAMOSA (ANR-13-ADAP-0010). B.P.S. was in receipt of a Chancellor's International PhD Scholarship from the University of Warwick.

References

- Armbrust, E.V., Bowen, J.D., Olson, R.J., and Chisholm, S.W. (1989) Effect of light on the cell cycle of a marine *Synechococcus* strain. *Appl Environ Microbiol* **55**: 425–432.
- Bergkessel, M., Basta, D.W., and Newman, D.K. (2016) The physiology of growth arrest: uniting molecular and environmental microbiology. *Nat Rev Microbiol* **14**: 549–562.
- Biller, S.J., Schubotz, F., Roggensack, S.E., Thompson, A.W., Summons, R.E., and Chisholm, S.W. (2014) Bacterial vesicles in marine ecosystems. *Science* **343**: 183–186.

- Binder, B.J., and Chisholm, S.W. (1995) Cell cycle regulation in marine *Synechococcus* sp. strains. *Appl Environ Microbiol* **61**: 708–717.
- Brahamsha, B. (1996) A genetic manipulation system for oceanic cyanobacteria of the genus *Synechococcus*. *Appl Environ Microbiol* **62**: 1747–1751.
- Breuer, S., Allers, T., Spohn, G., and Soppa, J. (2006) Regulated polyploidy in halophilic archaea. *PLoS One* **1**: e92.
- Carini, P., Van Mooy, B.A.S., Thrash, J.C., White, A., Zhao, Y., and Campbell, E.O. (2015) SAR11 lipid renovation in response to phosphate starvation. *Proc Natl Acad Sci USA* **112**: 7767–7772.
- Farrant, G.K., Doré, H., Cornejo-Castillo, F.M., Partensky, F., Ratn, M., Ostrowski, M., *et al.* (2016) Delineating ecologically significant taxonomic units from global patterns of marine picocyanobacteria. *Proc Natl Acad Sci USA* **113**: E3365–E3374.
- Fuller, N.J., Marie, D., Partensky, F., Vaulot, D., Post, A.F., and Scanlan, D.J. (2003) Clade-specific 16S ribosomal DNA oligonucleotides reveal the predominance of a single marine *Synechococcus* clade throughout a stratified water column in the Red Sea. *Appl Environ Microbiol* **69**: 2430–2443.
- Giovannoni, S.J., Tripp, H.J., Givan, S., Podar, M., Vergin, K.L., and Baptista, D. (2005) Genome streamlining in a cosmopolitan oceanic bacterium. *Science* **309**: 1242–1245.
- Griese, M., Lange, C., and Soppa, J. (2011) Ploidy in cyanobacteria. *FEMS Microbiol Lett* **323**: 124–131.
- Hu, B., Yang, G., Zhao, W., Zhang, Y., and Zhao, J. (2007) MreB is important for cell shape but not for chromosome segregation of the filamentous cyanobacterium *Anabaena* sp. PCC 7120. *Mol Microbiol* **63**: 1640–1652.
- Jain, I.H., Vijayan, V., and O'Shea, E.K. (2012) Spatial ordering of chromosomes enhances the fidelity of chromosome partitioning in cyanobacteria. *Proc Natl Acad Sci USA* **109**: 13638–13643.
- Kettler, G.C., Martiny, A.C., Huang, K., Zucker, J., Coleman, M.L., Rodrigue, S., *et al.* (2007) Patterns and implications of gene gain and loss in the evolution of *Prochlorococcus*. *PLoS Genet* **3**: 2515–2528.
- Makarova, K.S., Aravind, L., Wolf, Y.I., Tatusov, R.L., Minton, K.W., Koonin, E.V., *et al.* (2001) Genome of the extremely radiation-resistant bacterium *Deinococcus radiodurans* viewed from the perspective of comparative genomics. *DNA Repair* **65**: 44–79.
- Mock, T., Otilar, R.P., Strauss, J., McMullan, M., Paajanen, P., Schmutz, J., *et al.* (2017) Evolutionary genomics of the cold-adapted diatom *Fragilariopsis cylindrus*. *Nature* **541**: 536–540.
- Morris, J.J., Lenski, R.E., and Zinser, E.R. (2012) The Black Queen hypothesis: evolution of dependencies through adaptive gene loss. *MBio* **3**: 1–7.
- Partensky, F., and Garczarek, L. (2010) *Prochlorococcus*: Advantages and limits of minimalism. *Ann Rev Mar Sci* **2**: 305–331.
- Raven, J.A. (1998) The twelfth Tansley Lecture. Small is beautiful: The picophytoplankton. *Funct Ecol* **12**: 503–513.
- Scanlan, D.J. (2012) Marine picocyanobacteria. In *Ecology of Cyanobacteria II: Their Diversity in Space and Time*. Whitton, B.A. (ed.). Dordrecht: Springer, pp. 503–533.
- Scanlan, D.J., Ostrowski, M., Mazard, S., Dufresne, A., Garczarek, L., Hess, W.R., *et al.* (2009) Ecological genomics of marine picocyanobacteria. *Microbiol Mol Biol Rev* **73**: 249–299.
- Schneider, D., Fuhrmann, E., Scholz, I., Hess, W.R., and Graumann, P.L. (2007) Fluorescence staining of live cyanobacterial cells suggest non-stringent chromosome segregation and absence of a connection between cytoplasmic and thylakoid membranes. *BMC Cell Biol* **8**: 39.
- Sebastián, M., Smith, A.F., González, J.M., Fredricks, H.F., Van Mooy, B.A.S., Koblížek, M., *et al.* (2016) Lipid remodelling is a widespread strategy in marine heterotrophic bacteria upon phosphorus deficiency. *ISME J* **10**: 968–978.
- Soppa, J. (2013) Evolutionary advantages of polyploidy in halophilic archaea. *Biochem Soc Trans* **41**: 339–343.
- Urbach, E., Scanlan, D.J., Distel, D.L., Waterbury, J.B., and Chisholm, S.W. (1998) Rapid diversification of marine picophytoplankton with dissimilar light-harvesting structures inferred from sequences of *Prochlorococcus* and *Synechococcus* (cyanobacteria). *J Mol Evol* **46**: 188–201.
- Van Mooy, B.A.S., Rocap, G., Fredricks, H.F., Evans, C.T., and Devol, A.H. (2006) Sulfolipids dramatically decrease phosphorus demand by picocyanobacteria in oligotrophic marine environments. *Proc Natl Acad Sci USA* **103**: 8607–8612.
- Watanabe, S., Ohbayashi, R., Kanesaki, Y., Saito, N., Chibazakura, T., Soga, T., *et al.* (2015) Intensive DNA replication and metabolism during the lag phase in cyanobacteria. *PLoS One* **10**: e0136800.
- Waterbury, J.B., Watson, S., Valois, F.W., Franks, D. (1986) Biological and ecological characterization of the marine unicellular cyanobacterium *Synechococcus*. In *Photosynthetic Picoplankton*. Platt, T., Li, W.K.W. (eds.). *Canadian Bull Fish Aquatic Sci* **214**: 71–120.
- Zerulla, K., Chimileski, S., Nather, D., Gophna, U., Papke, R.T., and Soppa, J. (2014) DNA as a phosphate storage polymer and the alternative advantages of polyploidy for growth or survival. *PLoS One* **9**: e94819.
- Zerulla, K., Ludt, K., and Soppa, J. (2016) The ploidy level of *Synechocystis* sp. PCC 6803 is highly variable and is influenced by growth phase and by chemical and physical external parameters. *Microbiology* **162**: 730–739.

Supporting Information

Additional Supporting Information may be found in the online version of this article at the publisher's web-site:

Fig. S1. Assessing the detection limit and the effect of salt on qPCR quantification of chromosome copy number in *Synechococcus* sp. WH7803 and WH7805. 10^0 – 10^7 sorted *Synechococcus* sp. WH7803 cells were used for qPCR with ASW medium (black circles) or washed with nuclease free water (white circles) to remove excess salt. The detection limit was determined to be 10^4 cells.

Fig. S2. Standard curves constructed with *Synechococcus* sp. WH7803 and WH7805 genomic DNA. The efficiency is calculated as R^2 .